

PROGRESSION INFORMATION EVENING 2025



INSIDE

All you need to know
about your **progression**
beyond the Sixth Form
College.

WEDNESDAY
21ST MAY 2025
5.30PM-7.30PM

FUTURE SUCCESS

Our dedicated Future's Hub Programme is designed to support students in exploring progression routes; engage in career development activities; develop skills; and build their CV. There is a running programme of additional activities.

WHAT TO EXPECT

EMPOWERING FUTURES

Through Aspire+ workshops and 1:1 mentoring, we guide students towards successful apprenticeship and degree apprenticeship applications.

CONNECTING STUDENTS WITH HIGHER EDUCATION & INDUSTRY OPPORTUNITIES

Curriculum teams frequently host Higher Education providers and Businesses who deliver talks, workshops and events. Curriculum teams also take students on visits to Universities and Businesses.

ACCESS PROFESSIONAL GUIDANCE WITH OUR QUALIFIED CAREERS ADVISOR

All students can book an appointment for careers guidance with our level 6 qualified Careers Adviser via teachers, progress coaches or simply by scanning the QR code link which can be found around the college.

PATHWAYS TO SUCCESS

A YEAR OF EMPOWERING EVENTS & OPPORTUNITIES

Embark on a journey of discovery and opportunity with the college's vibrant array of events and initiatives designed to shape your future. Throughout the academic year, we've curated an enriching calendar of activities to empower you in charting your path to success. From insightful tutorial programs to dynamic career fairs and personalised mentorship, our commitment to your growth knows no bounds. Join us as we unlock doors to endless possibilities and set the stage for your brightest tomorrow.

AUTUMN TERM

The PPD Programme fosters students' awareness of their transferable skills and their relevance to future endeavors. It encourages reflection on post-college options and how acquired skills align with these pathways. Through exploration of super and extracurricular activities, students cultivate skills and experiences applicable to their chosen progression routes.

In September, students visit Oxford and Cambridge Universities, while Keele University and the University of Staffordshire offer personal statement reviews. At lunchtimes, local charities and employers offer volunteering and part-time work opportunities. The Aspire + program supports Year 1 with part-time jobs and Year 2 with apprenticeship searches.

In December, students benefit from mock interviews conducted by the University of Staffordshire careers team, specifically tailored for those pursuing careers in nursing, teaching, or social work. These simulated interviews provide invaluable preparation and insight into the professional expectations of these fields.

SPRING TERM

In the PPD Programme, we delve deeper into various progression options, guiding students in detailed research and skill alignment. As the Spring Term concludes, we transition to crafting personalized personal statements to support their chosen paths.

In January students who do not have exams are expected to gain work experience. Support is given via PPD during the autumn term and drop in sessions in the careers hub.

March sees the annual careers fair with over 80 exhibitors including: universities; employers; apprenticeship providers and the voluntary sector.

Pathway careers days see employers, industry professionals and apprentices delivering talks and providing students with valuable insights into diverse career paths.

SUMMER TERM

In the PPD Programme, we guide students through the UCAS registration and application process. As the term progresses, we revisit all progression routes, ensuring students have comprehensive knowledge and understanding of their available options.

The Futures and Careers Team offers:

- Drop-in sessions with Keele University and the University of Staffordshire for students applying for 2025 or 2026 entry.
- Early personal statement reviews in July.
- Targeted support for Year 2 students uncertain about progression plans.
- A tailored progression event for L3 Foundation students departing in June, featuring FE and apprenticeship providers.

PROGRAMME

EXPLORE. DISCOVER. ASPIRE.

Tonight is your opportunity to meet our team, chat with current students, and connect with universities and employers who are here to support your journey beyond college.

EVENT	ROOM	TIMES
Student Finance (Keele University)	Food Hall	5.40pm, 6.20pm, 7.00 pm
What does it mean to go to university? (University of Staffordshire)	Science Centre R001	5.40pm, 6.20pm, 7.00 pm
Degree Apprenticeships (University of Staffordshire)	Science Centre R002	5.40pm, 6.20pm
Applying to Competitive Universities (Leeds University)	G57/G58	5.45pm, 6.45pm
Support for Early (Competitive) Applicant	G57/G58	6.15pm, 7.15 pm
Applying for Courses with Placement Year (Aston university)	G50	6.15pm, 7.15 pm
Applying for Apprenticeships – A Student Perspective (Student Panel)	MGO1	5.45pm, 6.45pm
Experiences of Going Through an Apprenticeship (Student Alumni)	MGO1	6.15pm, 7.15 pm
Gap Year	G49	5.45pm, 6.15pm, 6.45pm, 7.15 pm

WHILE YOU'RE HERE...

Make the most of your evening with these additional opportunities:

- 5.15pm – 7.00pm: **Refreshments** are available in the Ground Floor LRC – feel free to drop in and take a break.
- 5.30pm to 7.40pm: **University and Employer Stands** will be in the Atrium – speak directly with representatives about your future options.
- 5.30pm to 7.40pm: **Careers Drop-In Service** is also open in the Atrium – pop by for personalised advice and guidance.



**WE VALUE
YOUR FEEDBACK!**
Scan the QR code
to share your feedback
about this evening's event.
Thank you!

HERE TO GUIDE YOU

Tonight, you can speak with universities and employers who are here to support your future plans. Whether you're exploring university, apprenticeships, or careers, they're ready to answer your questions and offer expert guidance.

EMPLOYERS:

COMPANY	ABOUT THEM...
DJH	DJH is an award-winning accountancy firm with offices across the Midlands, North West, and Yorkshire. Their multidisciplinary team supports clients with everything from tax and audit to HR and corporate finance, combining expert service with a fun, collaborative culture.
JCB	JCB is one of the world's largest construction equipment manufacturers, known for innovation and setting industry standards. With over 300 products made across four continents, JCB offers unmatched opportunities through its Early Careers schemes, driven by a passionate and forward-thinking team.
Jaguar Land Rover (JLR)	Jaguar Land Rover is shaping the future of modern luxury, designing iconic vehicles like Range Rover, Discovery, Defender, and Jaguar. With a focus on innovation, sustainability, and personal growth, JLR offers exciting early career opportunities for those ready to think big, be bold, and make a difference.
MPFT	We are a local Paediatric Speech & Language Therapy Team who provide a service to local young people and families to support their speech, language, feeding and communication skills. We work with children and young people age 0-25.
Ormiston Teacher Training Academy	Ormiston Teacher Training offers a school-centred initial teacher training (SCITT) programme in partnership with the National Institute of Teaching. With placements in classrooms from day one, trainees receive expert mentoring and weekly core training across campuses in the West Midlands, Staffordshire, Norfolk, and Suffolk.
Radiography Royal Stoke	Our team specialises in a wide range of imaging services, including X-ray, CT, MRI, Nuclear Medicine, and Ultrasound. Discover the exciting and rewarding careers available within medical imaging. Providing clear information on different roles, qualifications needed, and pathways to get started in this vital area of healthcare.
Rebus Training	Interested in becoming an electrician? The UK construction needs more talent – our electrical apprenticeship programmes offer hands-on training and real-world experience to help you build a career in the construction and electrical industry. Learn about the routes into the trade, skills you'll gain, and how to get started.
Royal Air Force (RAF)	The RAF is the UK's air and space force. With over 100 years of service, the RAF plays a vital role in defending UK airspace and supporting military operations around the world. Its work includes aerial defence, humanitarian missions, and tactical support for the British Army, offering a wide range of rewarding careers.
Royal Navy	The Royal Navy has protected the UK's interests at sea for over 500 years. From disaster relief to global security, it offers a wide range of careers in areas like engineering, logistics, medicine, and aviation—combining skill development with the chance to travel and make a real difference.
RSM	RSM is a global leader in Audit, Tax and Consulting. Our Early Careers programmes offer hands-on experience, professional training, and the chance to make a real difference from day one. We're looking for ambitious graduates to grow with us and shape a better future.
Staffordshire Fire and Rescue	Staffordshire Fire and Rescue Service plays a vital role in keeping communities safe by preventing fires and responding to a wide range of emergency incidents across the county. Their work goes beyond fire response, including education, prevention campaigns, and community support to help reduce risk and save lives.
Institute of Policing: University of Staffordshire	Institute of Policing courses are designed to prepare students for a successful career in the police force or wider criminal justice sector. With strong links to local forces and real-world learning opportunities, it focuses on developing practical skills, professional knowledge, and a deep understanding of modern policing challenges.
Stoke on Trent City Council	Stoke on Trent City Council is a fantastic place to work, we have strategic leadership and can offer a challenging and supportive organisation to be part of. Our aim is to support the people who live and work here by providing the best services that meets the needs of our communities and families.
UNITAS	Unitas maintains over 17,500 homes and 600 public buildings across Stoke-on-Trent. We deliver high-quality repairs and maintenance, supporting safe, comfortable living and essential public services for the local community.
Wood Goldstraw Yorath	Founded in 1874, Wood Goldstraw Yorath is the largest multidisciplinary practice in North Staffordshire. Based in Stoke-on-Trent, we operate nationally, offering expertise in Architecture, Quantity Surveying, Project Management, and CDM Consultancy.

UNIVERSITIES:

UNIVERISTY	ABOUT THEM...	OPEN EVENTS
Aston University	Aston University, located in central Birmingham, is home to over 18,000 students from more than 120 countries. Ranked 21st in the 2025 Guardian University Guide, it offers a wide range of courses including STEM, social sciences, business, and healthcare sciences.	Friday 4th July
Keele University	Set in the Staffordshire countryside near Stoke-on-Trent, offering a beautiful campus and a global community focused on academic and personal growth. Known for world-class research and innovative, career-focused courses, Keele blends modern learning with real-world opportunities.	Friday 27th June Saturday 28th June Saturday 16th August
Lancaster University	Lancaster is one of the UK's top universities, consistently ranked in the top 15 across major league tables. It offers students the chance to broaden their horizons, gain new perspectives, and enjoy transformative experiences.	Saturday 28th June Saturday 12th July
Leeds University	The University of Leeds is one of the UK's largest and most prestigious institutions, ranked in the world's top 75 (QS 2024) and part of the Russell Group. With over 39,000 students from 137 countries, it offers world-class teaching, global opportunities, and a vibrant, welcoming community.	Friday 13th June Saturday 14th June
LIPA	LIPA is for those passionate about the performing arts and committed to turning that passion into a lifelong career. Through hands-on training, industry insight, and creative freedom, LIPA prepares students for sustained work on stage, on screen, behind the scenes, and around the world.	Wednesday 25th June
Loughborough University	Loughborough University is a top ten UK university based in the East Midlands, renowned for its excellence in sport. Named Sports University of the Year 2025 and ranked best in the world for sports-related subjects for eight years running (QS), it offers an outstanding student experience.	Friday 27th June Saturday 28th June
MMU	We received overall gold in the Teaching Excellence Framework 2023-27, meaning we're rated as an outstanding university for our student experience. We are the top-rated university for degree apprenticeships, and recognised as Grade 1 Outstanding by Ofsted.	Wednesday 18th June
Nottingham Trent University	Nottingham Trent University is one of the UK's most popular universities, known for its strong focus on student experience and career-ready education. With award-winning teaching, excellent industry links, and a vibrant city-centre campus, NTU helps students thrive academically and professionally.	Saturday 28th June
Sheffield Hallam University	Sheffield Hallam University is one of the UK's largest and most diverse universities, with a strong focus on student success and employability. Rated Gold in the Teaching Excellence Framework, 95% of its graduates are in work or further study within 15 months.	Saturday 5th July
University of Derby	The University of Derby offers an industry-focused, research-informed learning experience designed to help you reach your potential. With expert teaching, career support, and hands-on access to specialist facilities, students are well prepared for future success from day one.	Friday 20th June Saturday 21st June
University of Nottingham	The University of Nottingham is a prestigious Russell Group university, ranked 8th in the UK for research power (REF 2021). With world-class teaching, award-winning campuses, and strong industry links, it offers real-world skills and experiences to help students stand out to top employers.	Friday 27th June Saturday 28th June
University of Salford	The University of Salford, just a mile from Manchester city centre, offers a wide range of courses across four specialist schools. Known for its research excellence, 78% of its research was rated world-leading or internationally excellent in the 2021 REF.	Saturday 14th June
University of Staffordshire	University of Staffordshire offers industry-focused education and cutting-edge facilities, including a nationally leading clinical simulation suite. With world-class staff and strong links to business and the community, it empowers students to realise their potential and drive real-world change.	Saturday 7th June (Stoke campus) Saturday 14th June (Stafford Campus)

Book your open day place directly on each university's website. Many now offer travel bursaries or financial support to help students attend—check individual websites for the latest information.



ADDITIONAL OPPORTUNITIES:

- **20th June:** UCAS Careers fair @ Staffordshire University campus
- **27th June:** Real Keele open day & workshops for Year 1 students
- **10th & 11th July:** University of Cambridge Trip (students only)

APPLYING FOR APPRENTICESHIPS

ROOM: MG01

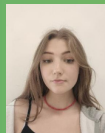
TIMES: 5.45PM & 6.45PM

Thinking about alternatives to university?

Hear first-hand from current and former students who've chosen the apprenticeship route and are thriving in industries like teaching, business, digital, and engineering.

This engaging session features quick introductions from each panelist, followed by a Q&A where you can ask about the application process, day-to-day life, and how to stand out. Discover how apprenticeships can lead to qualifications, valuable experience, and exciting careers.

THE PANEL:



JULIA KARPINSKI

A current student studying Further Maths, Statistics and Philosophy, soon to begin a Maths Teacher Degree Apprenticeship with Discovery Academy.



JAMES HOWARD

Studying Biology, Chemistry and Maths; secured a Nuclear Business Management Degree Apprenticeship with Rolls Royce and Derby University.



HAZIQ HUSSAIN

Former student now working as a Digital and Technology Solutions Degree Apprentice (Data Analytics) at Jaguar Land Rover.



JOSEPH ECKERT

Former student undertaking a Degree Apprenticeship in Quantity Surveying with Defence Infrastructure Organisation (DIO).

GAP YEAR

ROOM: G49

TIMES: 5.45PM, 6.15PM, 6.45PM & 7.15 PM

REASONS TO CONSIDER

- Earn and save money before university
- Gain valuable work experience
- Develop maturity and life experience
- Take a break from studying, volunteer, work, or travel

RESOURCES

Start your research at UCAS Gap Years (www.ucas.com/discover/gap-years).

SUPPORT

If you need help applying to university during a gap year, contact our career adviser at cthorne@sfc.potteries.ac.uk for guidance.



UCAS: KEY DATES



DEADLINES

Adhering to internal deadlines is crucial for progress checks before final UCAS submission. Students must acknowledge their reference and predicted grades on CEDAR beforehand.

UCAS APPLICATION TIMELINE

APPLICATION	INTERNAL DEADLINE	EXTERNAL DEADLINE
Conservatoire (Music only)	Sunday 14th September 2025	2nd October 2025
Oxbridge/early applicant	Sunday 14th September 2025	15th October 2025
Admissions Tests	Friday 5th September 2025	29th September 2025
Russell Group, Competitive Health, Competitive Dance & Drama, & Education & most Conservatoire (dance/drama/musical theatre only). E.g. Nursing, Midwifery, Physiotherapy, Paramedics (Primary Education, Early Years, Education Studies) & Competitive Sciences (Biomedical Science, Biochemistry, Pharmacy)	Students are advised to complete early in the Autumn Term to secure offers	14th January 2026
Local/National (non competitive courses)	Sunday 4th January 2026	14th January 2026

PREDICTED GRADES & REFERENCES

Predicted grades are usually based on performance across year 1. All year 13 students will sit mock exams in the Autumn Term after which UCAS predicted grades can be amended if required.

EMPOWERING PROGRESSION

Our High Achievers Coordinators provide comprehensive support to students pursuing higher education excellence. They offer assistance with university visits, access schemes, admission test preparation and interview readiness. Each coordinator specialises in different university links and pathways, ensuring tailored support for every student's unique aspirations and goals.



MEET OUR HIGH ACHIEVERS COORDINATORS:



ED SWANN: HEAD OF HIGH ACHIEVERS

Uni Links: Oxford, Cambridge, St Andrews and Queens (Belfast).

MDV Progression (Medicine, Dentistry and Veterinary Science).
MDV Society and HE+ Scheme.



SIAN HOLAH: CO-ORDINATOR

Uni Links: Warwick, Leeds (incl. Warwick Scholars Scheme and Access to Leeds).

HLL Progression (Humanities, Language and Literature).
Essay competitions in History and Politics



DAVID PARRY: CO-ORDINATOR

Uni Links: Imperial College, Manchester.

STEM Progression (Science, Technology, Engineering and Mathematics).
MEC society (Mathematical Science, Engineering and Computing), EDT industrial cadets,
Citizen Project run by Institute of Civil Engineers, Science Olympiad and UKMT maths comps



GEMMA STEVENTON-MARTIN: COORDINATOR

Uni Links: Liverpool, Loughborough (Sport courses).

ESSH Progression: (Education, Sport, Social Science, and Health).
Online International Psychology Conference - hosted by Oxford High School.



ANNA HUGHES: COORDINATOR

Uni Links: Birmingham, LiPA (Music courses).

CAP Progression: (Creative and Performing Arts – incl. Architecture).
Audition and Portfolio building Workshops, Music Theory Club (up to grade 8), National
Youth Theatre Workshop and Audition, Competitions and performances.



JODIE GUT: COORDINATOR

Uni Links: US universities, LSE (London School of Economics).

BFL Progression: (Business, Finance and Law).

A MESSAGE FROM THE COLLEGE BURSARY TEAM

IMPORTANT INFORMATION FOR SECOND-YEAR STUDENTS:

- Moving into your 2nd year?
- Received college bursary (financial support) last year?
- Received Free Meals last year?

ALL STUDENTS MUST RE-APPLY FOR SUPPORT.

- Re-Application: We will notify you when you can log onto PaymyStudent and re-apply.
- Travel Costs: The bursary covers travel costs to university open days/applicant days. Keep your receipts/tickets and event info, then email the bursary team.
- Re-Apply Promptly: If you do not re-apply, your support will stop.
- Questions? Email us at bursary@sfc.potteries.ac.uk.

Please Note: Starting in September, transport payments will not be given to students living within 1 mile of the college.

FURTHER INFORMATION

UCAS website <https://ultimateguidesucas.com/>
The 2023– 2024 Parent's guide on the College website
will be updated in June for 2025 – 2026



**SCAN THIS QR CODE
TO BOOK YOUR CAREERS
APPOINTMENT TODAY!**

