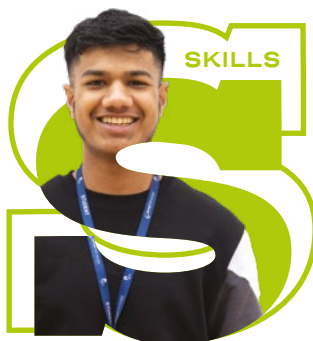




ACHIEVEMENT



SKILLS



PARTICIPATION



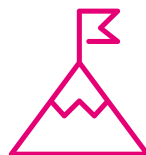
INDEPENDENCE



RESPECT



ENDEAVOUR



WHAT DO YOU **ASPIRE** TO BE?

16-19 PROSPECTUS 2024

WHAT DO YOU ASPIRE TO BE?

OPEN EVENTS

Wednesday 11th October 2023

Tuesday 21st November 2023

Tuesday 27th February 2024

All Open Events take place from
5.00pm-7.00pm



Welcome to our college prospectus, where your next educational journey begins!

As the first purpose built Sixth Form College in the country, we have been delivering sixth form education to students for over 50 years. We've empowered more than 35,000 young individuals to reach their potential, leading them to higher education at universities both within the UK and around the world, as well as embark on diverse and fulfilling career paths through jobs and apprenticeships. With a wealth of experience, we are experts in the field of providing high quality education for all across a wide range of academic, technical and vocational courses. This education goes well beyond success in qualifications, encompassing many clubs, societies, trips, work experience and extra-curricular experiences to inspire and develop the wider skills of every young person.

We have high expectations and aspirations for all our students and will help you develop into independent learners through a range of tasks and activities that will bring out the best in each individual. At the same time, personal support is never far away, and staff always operate an open-door policy so that you can get help and advice whenever you need it. What's more, a full range of one-to-one and small group subject support sessions are available every week, as well as personalised support for student emotional wellbeing. As the recent Ofsted inspection noted, "Students benefit from a mature, caring environment at the college, where they are treated as individuals and supported effectively by teachers and support staff to achieve their qualifications. They are confident to ask for help. Students learn from mistakes in their work and improve throughout their time at college."

So don't be afraid to ask questions, try out your own ideas and learn from your mistakes, as this will give you the best possible preparation for success in your subjects. We can build a timetable around your needs; offer endless opportunities for you to try new things and to find out about your future career through exciting visits, talks and placements so you can move on with confidence to the next stage in your life. We hope to inspire you to become lifelong learners, whether inside or outside a classroom, so that you can develop the skills and determination to achieve far more than you ever expected. I look forward to welcoming you all into our learning community.

MARK KENT
PRINCIPAL



YOUR COLLEGE JOURNEY

Introducing our comprehensive step-by-step guide to navigating your college adventure. From the moment you hit that "Apply" button to the thrilling first days as a Sixth Form College student, we've got all the insider knowledge you need!

1> RESEARCH

Find out about what we can offer you by visiting our website www.stokesfc.ac.uk and by taking a virtual tour at www.vtour.stokesfc.ac.uk. You can also come along to an open event and visit us in person. We also have a friendly Admissions Team ready to answer your questions. To get in touch, call **01782 854221** or email admissions@stokesfc.ac.uk

2> APPLY

Complete our online application form, visit www.stokesfc.ac.uk

3> FIRST COURSE DISCUSSION

After making your application, you will be invited to a first course discussion where you will talk to one of our experts and discuss your options. This is a fantastic opportunity to ask questions which will help you to reach the right decisions.

4> GET READY FOR SIXTH FORM

You will be invited to take part in our Get Ready for Sixth Form Programme. Made up of three-steps comprising a mixture of face to face and online activities to give you a taste of the subjects you want to study and an experience of college life.

STEP 1

Get Ready, Get on the Platform

This is our online platform where you can have a go at subject-specific tasks, join in live chats and Q&A with teachers, create spaces to chat with like-minded students and more.

STEP 2

Get Ready, Get Informed

A one-day event where you will be invited into the college and participate in subject taster sessions.

STEP 3

Get Ready, Get Transformed

Also known as enrolment where you will be transformed into a Sixth Form College student! **See below.**

5> WE'VE GOT YOU!

Throughout the summer we will keep in regular contact with you through monthly newsletters and preparation tasks to complete as you make the transition from high school to college.

6> GET READY, GET TRANSFORMED

Step 3 of our Get Ready for Sixth Form Programme (above), where you will attend your enrolment appointment after receiving your GCSE results. If your results aren't quite what you expected, please still attend this appointment so that we can discuss your options.

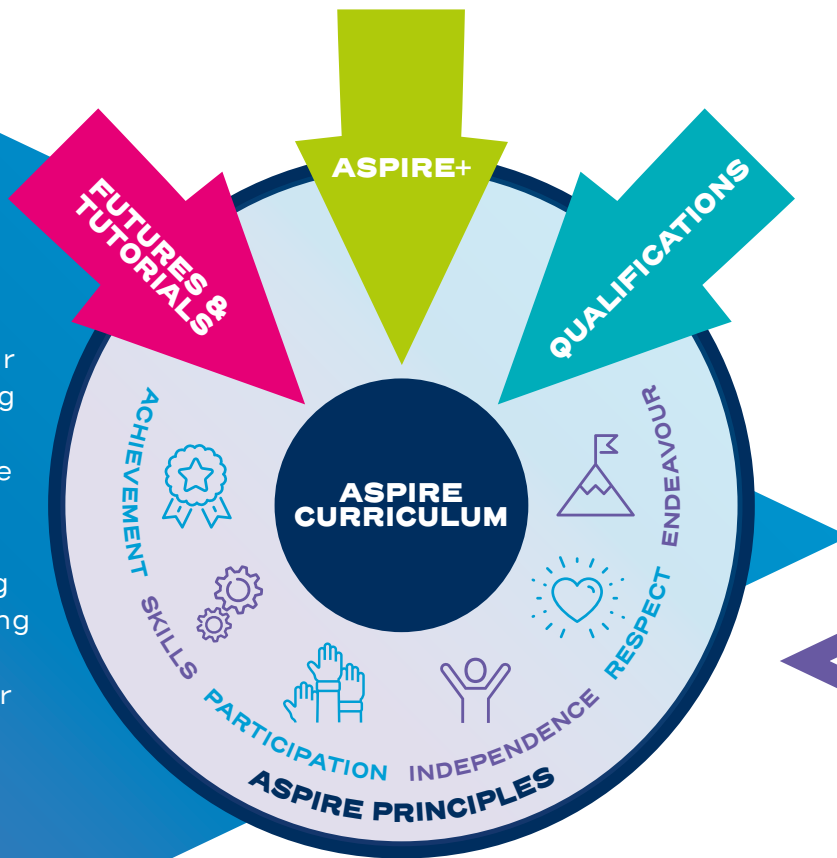
7> WELCOME FEST

It's official, you are now a Sixth Form College student! Before the start of year, you will attend an induction called Welcome Fest and receive your timetable.



THE ASPIRE CURRICULUM

The Aspire Curriculum is the framework for your college journey, outlining the required areas of study. It consists of three main components that shape your educational experience from gaining qualifications to gathering skills and experiences that will prepare you for life after college.



QUALIFICATIONS

Qualifications are an important part of your college journey. They come in various forms, including academic achievements like A-levels, vocational qualifications such as BTECs, technical qualifications like T Levels and industry-specific certifications. These qualifications are what you'll work towards while you're in college. **Find out more on page 8.**

FUTURES & TUTORIALS

We have a comprehensive Futures Programme and Tutorial Programme aimed at equipping you with the knowledge, support, and inspiration needed to actively plan and prepare for your future. Our primary goal is to provide you with the necessary skills and qualifications that will pave the way for a confident transition into higher education, apprenticeships, or employment opportunities.

ASPIRE+

We understand that college life is about more than just qualifications. We highly value the exceptional skills and abilities that our students bring, whether in academics, sports, music, or other areas. That's why we offer a diverse range of extracurricular activities, including clubs, societies, trips, and visits. These activities not only allow you to develop your talents and enhance your employability skills but also provide a fun and social environment where you can make lasting friendships. **Head to page 30 for more information.**

ASPIRE PRINCIPLES

At the heart of the Aspire Curriculum are our Aspire Principles, which serve as the foundation for your success and future progression. These principles are represented by the acronym **ASPIRE**.

These principles are integrated throughout the Aspire Curriculum to provide you with the essential tools and mindset for success. We apply these principles to recognise and commend our students when they demonstrate any of the six principles.



ACHIEVEMENT



SKILLS



PARTICIPATION



INDEPENDENCE



RESPECT



ENDEAVOUR



CHOOSING THE RIGHT QUALIFICATIONS FOR YOU

With more than 60 courses available it's important to choose the right qualifications for you that best support and enhance your career choices after college. To help you enrol on a course combination that is suitable for your individual goals, staff at the college will advise and support you at every stage of your application.

WHAT WE OFFER



A LEVELS

If you thrive on academic subjects and enjoy the challenge of exams, our wide range of A Level subjects are perfect for you. Dive deep into your areas of interest, develop critical thinking skills, and prepare for future academic pursuits.

T LEVELS

T Levels offer a unique blend of classroom theory, practical learning, and real workplace experience. Equivalent to three A Levels, this innovative qualification allows you to gain valuable industry placement and hands-on skills. Experience the best of both worlds with T Levels!

BTEC/CTEC

If you thrive on hands-on experience and prefer regular coursework and practical assessments, our BTEC/CTEC courses are the perfect fit for you. Immerse yourself in real-world scenarios, gain valuable skills, and showcase your progress through practical assessments.

LEVEL 3 FOUNDATION PROGRAMME

If you have not secured the grades needed to study A Levels, T Level or BTEC / CTEC then we have a dedicated programme designed to be a gateway to progress onto further study at the Sixth Form College. You can choose from different foundation routes in this one-year programme which has been tailored to provide you with the skills and qualifications needed to progress.

You can find out more on page 28.

When choosing the right qualifications for you, we find it's best to focus on your intended career path and not just qualifications. The below guide is an example of the choices that are available dependent on your grades and on where you would like to progress onto after college and beyond.



YOUR INTENDED PROGRESSION

YOUR CHOICES

GCSE GRADES ACHIEVED OR PREDICTED

Leading Russell Group / Sutton 30 Universities Degree Apprenticeship	A Levels T Levels	Higher grades 9–6 across all subjects at GCSE
National Universities Local Universities	A Levels T Levels BTEC / CTEC	GCSE grades 9–5 across the majority of subjects at GCSE
Apprenticeships Employment Part-time Higher Education	A Levels T Levels BTEC / CTEC (or a combination of A Levels and BTEC/CTEC)	Minimum 9–4 across the majority of subjects at GCSE

Most careers, university courses and apprenticeships require at least a grade 4 in GCSE Mathematics and English Language. Students who haven't secured these grades will work towards achieving them whilst at college.

GOOD TO KNOW



COURSE LIST

At the Sixth Form College, you have the freedom to choose from over 60 courses. Whether it's A Levels, BTECs, or a mix of both, we've got you covered. As the first college to introduce technical levels in our city, we also invite you to explore our increasingly popular and diverse selection of T Levels.

Our pathways reflect career areas, giving you an idea of courses that work well together. However, feel free to mix and match to create a unique program of study that fits your goals and aspirations.

We're here to support you in finding the perfect course combination for your future. Let's unlock your potential and open doors to endless possibilities together!



Pathway Key

- Business, Finance & Law
- Education, Society, Sport & Health
- Science, Technology, Engineering & Maths
- Creative & Performing Arts
- Humanities, Languages & Literature

A LEVEL/ LEVEL 3

- Arabic
- Art & Design
- Biology
- Business Studies
- Chemistry
- Classical Civilisation
- Computer Science
- Dance
- Economics
- English Language
- English Literature
- Environmental Science
- French
- Further Mathematics
- Geography
- Geology
- German
- Graphic Design
- History
- Law
- Mathematics
- Media Studies
- Music
- Philosophy
- Photography
- Psychology
- Physical Education
- Physics
- Politics

BTEC/ VOCATIONAL/ LEVEL 3

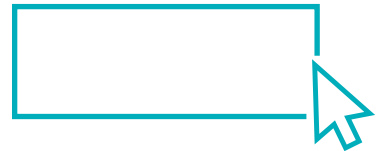
- Religious Studies
- Sociology
- Spanish
- Statistics
- Textiles
- 3D Design – Product Design & Architecture
- Applied Human Biology
- Applied Psychology
- Applied Science
- Business
- Criminology
- Dance
- Digital Games Design & Development
- Digital Games Production
- Digital Music Production
- Health & Social Care
- Law
- Music Performance
- Musical Theatre
- Sports Coaching & Development
- Sports & Exercise Science
- Theatre
- TV & Film Production

T LEVEL/ LEVEL 3

- Digital Cybersecurity
- Digital Production, Design & Development
- Education & Childcare
- Finance
- Health
- Legal Services
- Management & Administration
- Media, Broadcast & Production
- Science

LEVEL 3 FOUNDATION PROGRAMME

- Business & Finance
- Creative
- Digital
- Education
- Health
- Humanities
- Science



Whilst our course list is correct at the time of publishing, we do sometimes have make changes that are outside our control.

PATHWAYS

BUSINESS, FINANCE & LAW

“

Choosing to study at Sixth Form College was an easy decision because they offered all the courses I wanted to study and they were so welcoming during open events. Taster sessions in Law and Psychology helped me create the perfect course combination! Supportive staff guided me in choosing between A Level and BTEC Psychology based on my learning preferences. Initially nervous, the teachers' ice breakers and informative overviews helped me settle in quickly. Overall, my experience has been fulfilling.

LEXIE MOULD

PREVIOUSLY
Biddulph High School

STUDIES
A Level Law, BTEC Psychology,
WJEC Criminology

48%
of students achieve
high grades

BTEC DIPLOMA

BUSINESS

A Level Equivalent: 2 A Levels

Assessed:
Combination of examination,
external assessment and coursework

Awarding Body: Pearson Edexcel

A LEVEL

BUSINESS STUDIES

Assessed: Exam – 100%

Awarding Body: Pearson Edexcel

WJEC DIPLOMA

CRIMINOLOGY

A Level Equivalent: 1 A Level

Assessed:
External Assessment – 50%,
Internal Assessment – 50%

Awarding Body: WJEC

A LEVEL

ECONOMICS

Assessed: Exam – 100%

Awarding Body: Pearson Edexcel

T LEVEL

FINANCE

A Level Equivalent: 3 A Levels

Occupational Specialism:
Financial Risk Analyst

Assessed:
Technical Qualification – 80%
(100% External Assessment),
Industry Placement – 20%

Awarding Body: Pearson



A LEVEL

LAW

Assessed: Exam – 100%

Awarding Body: OCR

BTEC EXTENDED CERTIFICATE

LAW

A Level Equivalent: 1 A Level

Assessed:
External Assessment – 50%,
Coursework – 50%

Awarding Body: Pearson Edexcel

T LEVEL

LEGAL SERVICES

A Level Equivalent: 3 A Levels

Occupational Specialism: TBA

Assessed:
Technical Qualification – 80%
(100% External Assessment),
Industry Placement – 20%

Awarding Body: Pearson

T LEVEL

MANAGEMENT & ADMINISTRATION

A Level Equivalent: 3 A Levels

Occupational Specialism:
Business Improvement

Assessed:
Technical Qualification – 80%
(100% External Assessment),
Industry Placement – 20%

Awarding Body: City & Guilds

PATHWAYS

CREATIVE & PERFORMING ARTS

“

I chose Sixth Form College based on a great taster day experience, staff really helped me make informed course decisions aligned with my interests. The college's facilities like the LRC and LSA areas ensure a quiet study space to complete independent learning. Joining the Dungeons and Dragons Society improved my communication skills and added a fun social aspect to my college experience. Overall, my Sixth Form College journey has been very rewarding.

HOPE MKANDAWIRE

PREVIOUSLY
Discovery Academy

STUDIES
A Level Media Studies,
BTEC Film & TV Production

OVER **80%**
of CAP courses have
improved their high
grades since 2019

A LEVEL

ART & DESIGN

Assessed:
Externally Set Assignment – 40%,
Coursework – 60%

Awarding Body: AQA

A LEVEL

DANCE

Assessed:
Exam – 50%,
Practical Assessment – 50%

Awarding Body: AQA

BTEC EXTENDED CERTIFICATE

DANCE

A Level Equivalent: 1 A Level

Assessed:
Controlled Assessment – 33%,
Coursework – 67%

Awarding Body: Pearson Edexcel



BTEC EXTENDED DIPLOMA

DIGITAL GAMES DESIGN & DEVELOPMENT

A Level Equivalent: 3 A Levels

Assessed:
Controlled Assessment – 33%,
Coursework – 67%

Awarding Body: Pearson Edexcel

BTEC EXTENDED CERTIFICATE

DIGITAL GAMES PRODUCTION

A Level Equivalent: 1 A Level

Assessed:
Internal Assessment – 100%

Awarding Body: Pearson

BTEC EXTENDED CERTIFICATE

DIGITAL MUSIC PRODUCTION

A Level Equivalent: 1 A Level

Assessed:
External Assessment – 30%,
Coursework – 70%

Awarding Body: Pearson Edexcel

A LEVEL

GRAPHIC DESIGN

Assessed:
Controlled Assessment – 50%,
Coursework – 50%

Awarding Body: Pearson Edexcel

T LEVEL

MEDIA, BROADCAST & PRODUCTION

A Level Equivalent: 3 A Levels

Occupational Specialism:
Content Creation & Production

Assessed:
Technical Qualification – 80%
(100% External Assessment),
Industry Placement – 20%

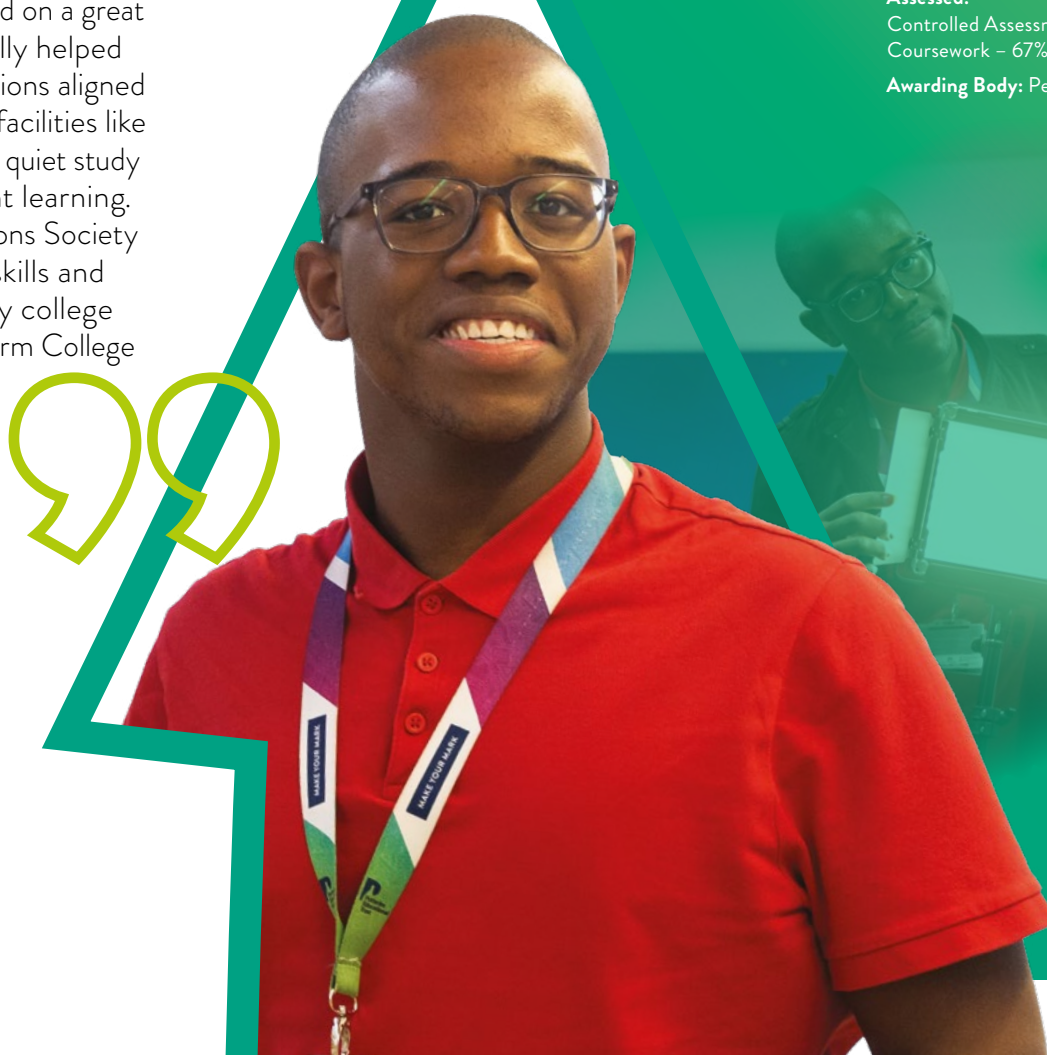
Awarding Body: Pearson

A LEVEL

MEDIA STUDIES

Assessed:
Exam – 70%,
Practical Assessment – 30%

Awarding Body: Eduqas



CREATIVE & PERFORMING ARTS

A LEVEL

MUSIC

Assessed:

Exam – 40%, Performance – 35%,
Composition – 25%

Awarding Body: Eduqas

BTEC EXTENDED CERTIFICATE

MUSICAL THEATRE

A Level Equivalent: 1 A Level

Assessed:

Controlled Assessment – 33%,
Coursework – 67%

Awarding Body: Pearson Edexcel

BTEC EXTENDED CERTIFICATE

MUSIC PERFORMANCE

A Level Equivalent: 1 A Level

Assessed:

External Assessment – 25%,
Coursework – 75%

Awarding Body: Pearson Edexcel

A LEVEL

PHOTOGRAPHY

Assessed:

Externally Set Assignment – 40%,
Coursework – 60%

Awarding Body: AQA

A LEVEL

TEXTILES

Assessed:

Externally Set Assignment – 40%,
Coursework – 60%

Awarding Body: AQA

BTEC EXTENDED CERTIFICATE

THEATRE

A Level Equivalent: 1 A Level

Assessed:

Controlled Assessment – 33%,
Coursework – 67%

Awarding Body: Pearson Edexcel

BTEC EXTENDED CERTIFICATE

TV & FILM PRODUCTION

A Level Equivalent: 1 A Level

Assessed:

Controlled Assessment – 33%,
Coursework – 67%

Awarding Body: Pearson Edexcel

A LEVEL

3D DESIGN – PRODUCT, DESIGN & ARCHITECTURE

Assessed:

Externally Set Assignment – 40%,
Coursework – 60%

Awarding Body: AQA



100%

of BTEC Musical Theatre
and BTEC Dance students
achieved high grades

WHAT DO YOU **ASPIRE** TO BE? 

PATHWAYS

EDUCATION, SOCIETY, SPORT & HEALTH

“

My transition into college was seamless, having the chance to socialise with lots of new people helped the settling-in process. The taster sessions at the Get Informed transition day for Psychology and Sociology provided valuable insights and enhanced my understanding of the subjects, solidifying my choices. Additionally, being part of the college basketball team has had a profound impact on my overall well-being. Competing in a sport not only serves as an outlet but also improves my physical health while allowing me to forge new friendships along the way.

ALEXANDRA JACOBS

PREVIOUSLY
Ormiston Sir Stanley Matthews Academy

STUDIES
A Level Sociology, A Level Psychology
and CTEC Health and Social Care



All ESSH courses
have achieved
OVER 50%
high grades



www.stokesfc.ac.uk

BTEC EXTENDED CERTIFICATE

APPLIED PSYCHOLOGY

A Level Equivalent: 1 A Level

Assessed:
External Assessment – 58%,
Internal Assessment – 42%

Awarding Body: Pearson Edexcel

T LEVEL

EDUCATION & CHILDCARE

A Level Equivalent: 3 A Levels

Occupational Specialism:
Early Years Educator – NCFE

Assessed:
Technical Qualification – 80%
(100% External Assessment),
Industry placement – 20%

Awarding Body: NCFE

T LEVEL

HEALTH

A Level Equivalent: 3 A Levels

Occupational Specialism:
Supporting Healthcare
(Adult Nursing)

Assessed:
Technical Qualification – 80%
(100% External Assessment),
Industry placement – 20%

Awarding Body: NCFE

CTEC EXTENDED CERTIFICATE OR EXTENDED DIPLOMA

HEALTH & SOCIAL CARE

A Level Equivalent:
Extended Certificate – 1 A Level
Extended Diploma – 3 A Levels

Awarding Body: OCR

EDUCATION, SOCIETY, SPORT & HEALTH

A LEVEL

PHYSICAL EDUCATION

Assessed:

Exam – 70%, Coursework – 15%,
Practical – 15%

Awarding Body: Pearson Edexcel

A LEVEL

PSYCHOLOGY

Assessed: Exam – 100%

Awarding Body: OCR

BTEC DIPLOMA OR EXTENDED DIPLOMA

SPORT COACHING & DEVELOPMENT

A Level Equivalent:

Diploma – 2 A Levels
Extended Diploma – 3 A Levels

Assessed:

Internal Assessment – 100%

Awarding Body: Pearson Edexcel

BTEC DIPLOMA OR EXTENDED DIPLOMA

SPORT & EXERCISE SCIENCE

A Level Equivalent:

Diploma – 2 A Levels
Extended Diploma – 3 A Levels

Assessed:

External Assessment – 42%,
Internal Assessment – 58%

Awarding Body: Pearson Edexcel

A LEVEL

SOCIOLOGY

Assessed: Exam – 100%

Awarding Body: AQA



SPORT ACADEMY

DELIVERING SPORTING EXCELLENCE

**TAKE YOUR SPORT
PERFORMANCE TO
THE NEXT LEVEL
WITH OUR SPORTS
ACADEMY.**

Learn how you can access expert
coaching and first-class facilities
by heading to **page 30** or clicking
the link here.

PATHWAYS

HUMANITIES, LANGUAGES & LITERATURE

“

Opting to study at the Sixth Form College was a choice I made without hesitation, particularly due to its strong Humanities Department and track record of achieving outstanding results.

As a Humanities student, engaging in various programmes such as the High Achievers Programme, HE+, Talented Athlete Programme, and the climbing club has provided me with unique opportunities to explore my higher education options and consider my future, including a memorable Oxbridge trip through the High Achievers Programme. The Sixth Form experience has not only enhanced my academic confidence but also fostered personal growth.

WILFRED HOUSTON-BROWN

PREVIOUSLY
Endon High School

STUDIES

A Level History, English Literature and Geography

”



A LEVEL

ARABIC

Assessed: Exam – 100%

Awarding Body: Pearson Edexcel

A LEVEL

CLASSICAL CIVILISATION

Assessed: Exam – 100%

Awarding Body: OCR

A LEVEL

ENGLISH LANGUAGE

Assessed: Exam – 80%,
Non-examination Assessment – 20%

Awarding Body: AQA

A LEVEL

ENGLISH LITERATURE

Assessed: Exam – 80%,
Coursework – 20%

Awarding Body: OCR

A LEVEL

ENVIRONMENTAL SCIENCE

Assessed: Exam – 100%

Awarding Body: AQA

A LEVEL

FRENCH

Assessed: Exam – 100%

Awarding Body: Eduqas

A LEVEL

GEOGRAPHY

Assessed: Exam – 80%,
Coursework – 20%

Awarding Body: Eduqas

A LEVEL

GEOLOGY

Assessed: Exam – 100%
+ Practical Endorsement

Awarding Body: OCR

A LEVEL

GERMAN

Assessed: Exam – 100%

Awarding Body: Eduqas

A LEVEL

HISTORY

Assessed: Exam – 80%,
Coursework – 20%

Awarding Body: Pearson Edexcel

A LEVEL

PHILOSOPHY

Assessed: Exam – 100%

Awarding Body: AQA

A LEVEL

POLITICS

Assessed: Exam – 100%

Awarding Body: Pearson Edexcel

A LEVEL

RELIGIOUS STUDIES

Assessed: Exam – 100%

Awarding Body: OCR

A LEVEL

SPANISH

Assessed: Exam – 100%

Awarding Body: Eduqas

The majority of HLL
subjects achieve at least

50%

high grades, with some
subjects achieving
significantly higher rates

PATHWAYS

SCIENCE, TECHNOLOGY, ENGINEERING & MATHS

“

Sixth Form College offered the courses I wanted to study and was conveniently located closer to my home compared to other colleges. The High Achievers Programme and Medicine, Dentistry and Veterinary (MDV) Society provided valuable insights into what to expect in the near future, helping me navigate my academic journey. Aspiring to pursue Medicine, I made the deliberate choice to study Biology and Chemistry, with Maths being a compulsory subject for my desired field. The college's course offerings aligned perfectly with my career aspirations, setting me on a well-chosen path towards achieving my goals.

**DESOLA
LANIBA**

PREVIOUSLY
Co-operative Academy

STUDIES
A Level Biology, Chemistry and Maths

BTEC EXTENDED CERTIFICATE

APPLIED HUMAN BIOLOGY

A Level Equivalent: 1 A Level

Assessed:
Coursework – 42%,
External Assessment – 58%
Awarding Body: Pearson Edexcel

BTEC EXTENDED CERTIFICATE

APPLIED SCIENCE

A Level Equivalent: 3 A Levels

Assessed:
Coursework – 60%,
External Assessments – 40%
Awarding Body: Pearson



A LEVEL

BIOLOGY

Assessed: Exam – 100%
+ Practical Endorsement
Awarding Body: OCR

A LEVEL

CHEMISTRY

Assessed: Exam – 100%
+ Practical Endorsement
Awarding Body: OCR

T LEVEL

DIGITAL PRODUCTION, DESIGN & DEVELOPMENT

A Level Equivalent: 3 A Levels

Occupational Specialism:
Software Design

Assessed:
Technical Qualification – 80%
(100% External Assessment),
Industry placement – 20%
Awarding Body: Pearson

A LEVEL

COMPUTER SCIENCE

Assessed: Exam – 100%
Awarding Body: OCR

T LEVEL

DIGITAL CYBERSECURITY

A Level Equivalent: 3 A Levels

Occupational Specialism:
Cybersecurity

Assessed:
Technical Qualification – 80%
(100% External Assessment),
Industry placement – 20%
Awarding Body: NCFE

A LEVEL

FURTHER MATHEMATICS

Assessed: Exam – 100%
Awarding Body: Pearson Edexcel
Duration: 1 year (taken in second
year of study)

A LEVEL

MATHEMATICS

Assessed: Exam – 100%
Awarding Body: Pearson Edexcel



SCIENCE, TECHNOLOGY, ENGINEERING & MATHS

A LEVEL

PHYSICS

Assessed: Exam – 100%

+ Practical Endorsement

Awarding Body: OCR

T LEVEL

SCIENCE

A Level Equivalent: 3 A Levels

Occupational Specialism:

Laboratory Sciences – NCFE

Assessed:

Technical Qualification – 80%

(100% External Assessment),

Industry placement – 20%

Awarding Body: NCFE

A LEVEL

STATISTICS

Assessed: Exam – 100%

Awarding Body: Pearson Edexcel

MEDICINE, DENTISTRY, VETERINARY (MDV) PROGRAMME

Join this highly successful programme, with a bespoke timetable to experience opportunities including work experience and placements, tailored sessions focusing on progression and a plethora of guest speakers and alumni visits to support you in achieving your dreams of entering these professions.



MATHS, ENGINEERING & COMPUTING (MEC) PROGRAMME

A bespoke programme of complimentary subjects which provide the widest choice of careers in these fields. Enjoy participation in real life engineering projects, team challenges, delving into the depths of mathematical analysis and reasoning to support your progression to highly competitive and in demand higher education courses and professions.



81%

of MEC students achieved
high grades in all their
subjects and 81% attained
4 A levels

LEVEL 3 FOUNDATION PROGRAMME

“

I found the college's environment and staff very supportive, providing me with a second chance to improve my grades. They guided me in selecting the right subjects, including GCSE Maths, and suggested the creative pathway for my future studies. I adapted to college life quickly, soon feeling at ease and able to express myself freely. Whether studying in the LRC on the second floor or the Social Space on the ground floor, these spaces helped me concentrate and focus on my studies. Ultimately, this college has been a welcoming and supportive home for my academic journey.

**ZEN
BHAUYAN**

PREVIOUSLY
Thistley Hough Academy

STUDIES
GCSE Maths, Media Studies and
Classical Civilisation

”

Have you struggled at school, perhaps lacking in confidence, but have the commitment and ambition to succeed? Maybe you have been previously home-schooled and need formal qualifications? Our Level 3 Foundation Programme will give you the qualifications and skills you need to progress into your chosen pathway.

The Foundation Programme is a new type of study programme, specifically designed to develop the skills, experience, knowledge and behaviours to support progression onto a Level 3 programme of study.

This programme is targeted at students who are not ready to start Level 3 but have the potential to progress onto a Level 3 programme of study following a tailored preparation programme. It is designed to support your success in achieving 4+ in both English and Maths, alongside our Foundation Programme to get you ready for the Level 3 programme of study the year after.

BUSINESS & FINANCE

GCSE Equivalent: 2 GCSE's minimum
Assessed: Various
Awarding Body: Various

CREATIVE

GCSE Equivalent: 2 GCSE's minimum
Assessed: Various
Awarding Body: Various

DIGITAL

GCSE Equivalent: 2 GCSE's minimum
Assessed: Various
Awarding Body: Various

EDUCATION

GCSE Equivalent: 2 GCSE's minimum
Assessed: Various
Awarding Body: Various

HEALTH

GCSE Equivalent: 2 GCSE's minimum
Assessed: Various
Awarding Body: Various

HUMANITIES

GCSE Equivalent: 2 GCSE's minimum
Assessed: Various
Awarding Body: Various

SCIENCE

GCSE Equivalent: 2 GCSE's minimum
Assessed: Various
Awarding Body: Various

You will also study GCSE
Maths and/or GCSE English

CORE GCSE TRANSITION ROUTE

If you haven't had the chance to study for GCSE's yet — whether you're an international student without equivalent qualifications, home schooled, or someone who took a break from education but is now ready to pursue full time learning this is the pathway for you. You will study either GCSE's in Biology, Chemistry, Physics, English and Maths or GCSE's in Sociology, Citizenship, English and Maths. Progression to Level 3 will be based on obtaining 4+ GCSE's at grade 4+, and having attendance of 90%+.

ONE: MORE THAN QUALIFICATIONS

ASPIRE+

All of our students develop skills beyond the classroom which are essential for their personal and professional growth. Aspire+ is an essential part of the Aspire Curriculum (see page 6) and provides students with opportunities to acquire skills that are not only valuable academically but for real-life settings and for future career plans.



SKILLS TO ASPIRE

To further nurture their growth, we have the Aspire+ Programme, which offers an array of clubs, societies, and tailored programmes. Through these offerings, we focus on skill development, personal growth, and self-discovery. Aspire+ empowers our students to actively contribute to our vibrant and dynamic learning environment.

ASPIRE FOR YOUR FUTURE

Coming to college offers a unique opportunity to take part in a broad range of exciting activities, which will help you to develop your confidence, give you great employability skills and help you to have fun, whilst making lasting friendships:

International Enrichment Trips

Duke of Edinburgh

Sports Enrichment

Clubs & Societies

Music Making

Student Governing Body

ASPIRE HIGHER

We will challenge you to aim high in many ways during your time with us, and for academically talented students we offer the following programmes to help you to excel:

High Achievers Programme

HE+ Programme

Extended Project Qualification



SPORT ACADEMY

Our Sport Academy aims to provide more students with sporting opportunities alongside academic study with our two key elements; Performance Academies and Elite Scholarship Programme. We can offer both competitive sport and coaching opportunities across various disciplines and deliver sporting excellence for interested students.

Performance Academies

Elite Scholarship Programme



NEW

FEMALE FOOTBALL

IN ASSOCIATION WITH STOKE CITY FOOTBALL CLUB

This unique partnership with Stoke City Football Club will provide aspiring young women, aged 16–19, studying any course at the Sixth Form College with the opportunity to participate in high-quality football training and competitive matches, regardless of their chosen field of study.

TWO: WE GET RESULTS

The Aspire Curriculum means that our graduates progress onto outstanding destinations. Including competitive Apprenticeships, Employment, Oxbridge and other prestigious universities to study desirable subjects such as Medicine.

97%
PASS RATE FOR
A LEVEL COURSES

75%
OF A LEVEL RESULTS
WERE A*-C

20%
OF ALL GRADES
WERE GRADE A

50%
OF STUDENTS
ACHIEVE
HIGH GRADES

99%
PASS RATE ACROSS
ALL BTEC'S



LAURA CHADWICK

Results: A Level Sociology A, Dance B, English Literature C and BTEC Dance Distinction

Next Steps: LMA Liverpool to study Dance



RABIYAH AREEJ

Results: Biology B, Chemistry B and Maths B

Next Steps: Keele University to study Medicine



JACK POWELL

Results: A Level Maths A*, Further Maths A, Biology A and Psychology A

Next Steps: Keele University to study Maths



ED BAINES

Results: Distinction in T Level Digital Support Services

Next Steps: Keele University to study Cyber Security



GRACE FOWELL

Results: A Level Psychology A, English Language B and Sociology B

Next Steps: Staffordshire University to study Primary Education



TALLULAH SHAW

Results: A Level Statistics B, Biology B and Chemistry B

Next Steps: University of Bristol to study Gateway to Veterinary Science



LUCY SOMOGY

Results: BTEC Applied Science D*D*D* and Core Maths

Next Steps: Royal Veterinary College to study Veterinary Medicine



ABBIE LEWIS

Results: A Level English Language A, Maths A, Philosophy B and German B

Next Steps: University of St Andrews to study German and Spanish



KAYLA MCCABE

Results: A Level Classical Civilisation A*, Philosophy B, Religious Studies B and Extended Project Qualification B

Next Steps: University of Durham to study Archaeology



JOY OWUSU

Results: BTEC Applied Science – Distinction, Distinction, Merit

Next Steps: University of Bradford to study Medicine (Foundation)



JAMIE HORE

Results: Further Maths A*, Maths A*, Chemistry A*, Physics A and Extended Project Qualification A

Next Steps: University of Cambridge to study Natural Science



LUC PARKINS

Results: T Level Digital Production, Design and Development – Distinction

Next Steps: College of Esports, London to study International Esports Business and Event Management



FIONA MUKARAGYE

Results: A Level Psychology A*, Spanish A and Biology C

Next Steps: Kent and Medway Medical School to study Medicine



SIX REASONS TO CHOOSE SIXTH FORM COLLEGE



THREE: CARING COMMUNITY

We want all our students to enjoy their time at college and we are committed to providing a high level of personalised support, whether that is with your studies, your health and wellbeing or your finances.

Our 'one stop' award winning Student Services team are dedicated to providing friendly and professional advice and support.

All our students have access to:

- A Progress Coach
- Safeguarding Support and Advice
- Careers and Employability Guidance
- Mental Health and Wellbeing Support
- Financial Support

Support is also offered to students with learning difficulties or disabilities, students with additional responsibilities, student who are lone living and overseas students.



The **ASPIRE** tutorial programme has been designed to compliment your studies and develop your personal skills. The compulsory 45 minutes weekly sessions will equip you not only for your ongoing academic program, but also for your progression after college. These are run by our Progress Coaches who are here to support and guide you through your time with us. They will also see you on a 1:1 basis regularly to check that you are progressing and achieving your potential.



FOUR: HIGH QUALITY TEACHING IN STATE-OF-THE-ART FACILITIES

The Sixth Form College has been designed to give you a learning environment in which you can thrive, create your future, and feel comfortable in being who you are.

Whether you need a quiet place to complete your coursework, a studio to practice your dance routine in, or a social place to grab a bite to eat, there's a space for you!

- Learning Resource Centres including quiet study areas and learning pods.
- High quality dance studio and performing spaces.
- Top class sports facilities based at Staffordshire University and Fenton Manor Sports Complex.
- Science Centre with superior laboratories.
- Immerse yourself in our Digital Centre equipped with well-resourced computer labs.
- Power up your learning experience with easy access to laptops through our Lapsafe units and long-term loan offer.
- Access to high-spec internet for personal devices.
- Discover a realm of cutting-edge education through our mind-expanding VR technology.



THE CENTRE FOR MEDICAL & HEALTHCARE SCIENCE

Discover limitless opportunities at our cutting-edge Centre for Medical and Healthcare Science, where seamless transitions between theory and practice redefine learning. Elevate your skills with our immersive rooms and simulated equipment, empower your future, and join a community committed to excellence in shaping the future workforce.



FIVE: BROAD RANGE OF COURSES

Choosing from over 60 courses, you will pick a unique programme of study. Choose from A Levels, BTEC's or indeed both. We also offer the new T Level qualification and a Level 3 Foundation Programme so that we can offer a course combination that works for you and your future.

“

The college's broad range of courses appealed to me, and after exploring various combinations of subjects, I discovered my passion for photography. Choosing A Level Photography alongside BTEC TV & Film Production, I now have a clear career path in mind. The availability of top-notch cameras, lighting, and sound equipment at the college has been instrumental in honing my film-based skills for a future career in the field.

**LEWIS
STEVENSON**

PREVIOUSLY
Biddulph High School

STUDIES
A Level Photography, BTEC Film
& TV Production

”

SIX: FUTURE SUCCESS

Our creative and exciting Futures Programme is designed to provide all students with the absolute best opportunities and bespoke support to ensure that you achieve your maximum potential in your chosen subjects and career.

This impressive programme consists of:

- A dedicated Futures zone with a team of knowledgeable advisers and well stocked with careers information.
- An exciting and comprehensive careers programme embedded into tutorial and curriculum classes including: information and advice on applying to university, personal statements and preparing for the world of work such as CV support and mock interviews.
- Engaging curriculum content designed to identify and develop relevant employability skills.



- Career-relevant independent study activities embedded into your programme of study.
- Personal and bespoke advice and guidance with a professionally trained impartial Careers and Progression Advisor.
- Help with finding your future through Unifrog: A computer software programme that is a one-stop shop for careers information.
- Multiple annual events supported by universities and employers plus a wide variety of in-college Higher Education and employers talks throughout the year.
- Creative and stimulating immersion days with a range of employers. Undertake relevant work experience or volunteering supported by the Progress Coach Team and the Futures Team
- We will keep in touch with you regularly with information about advertising apprenticeships, employment opportunities, university taster courses and masterclasses.

To find out more visit the Futures Zone located in the First Floor Pod or visit www.stokesfc.ac.uk



THE FUTURE IS GREEN

We want to protect our planet and your future, so we are continually looking at ways in which we can operate in a greener and more sustainable way.

Here's what we are doing:

THIS IS WHAT WE'RE ASPIRING TO

- To save trees, we are reducing the size and number of pages in our prospectus, printing fewer copies and using paper sourced from designated wood harvested from forests that are responsibly managed, socially beneficial, environmentally conscious, and economically viable.
- We encourage the use of our NEW digital prospectus as an eco-friendlier option.
- Our new Medical and Healthcare Science extension is rated very good in the national BREEAM accreditation.
- To increase our existing energy production on-site; a new solar array will be installed on our new extension.

- We are reducing energy by replacing lights with energy-efficient LED models by the end of 2023 and new energy-efficient and low-heat IT equipment.
- Students and staff can help; with easy access to recycling points with multiple stations around college grounds and buildings.
- We are thoughtful when using paper and aim to become as paperless as possible.
- To encourage staff and students to use shared transport and reduce their carbon footprint, we are conveniently located next to many bus routes, the train station and roads with cycle routes.
- We use local suppliers when we have the opportunity.



OPEN EVENTS

Wednesday 11th October 2023

Tuesday 21st November 2023

Tuesday 27th February 2024

All Open Events take place from
5.00pm–7.00pm



T: 01782 854221

E: admissions@stokesfc.ac.uk

W: www.stokesfc.ac.uk



facebook.com
/SOT6thformcollege



twitter.com
/SOT6FC



youtube.com
/SOT6FC



instagram.com
/sot6fc



The paper we use has been sourced from designated wood harvested from forests that are responsibly managed, socially beneficial, environmentally conscious and economically viable