

# TIME TO ASPIRE



 **16-19 PROSPECTUS** 2025



# WHAT DO YOU ASPIRE TO BE?

## OPEN EVENTS

Tuesday 8th October 2024

Wednesday 20th November 2024

Tuesday 25th February 2025

All Open Events take place from 5.00pm-7.00pm

## Welcome to the City of Stoke-on-Trent Sixth Form College prospectus for 2025.

I am delighted that you are considering the Sixth Form College as the next step in your educational journey. We are situated in the heart of Stoke-on-Trent and we have been providing post-16 education for young people for nearly 55 years. We are extremely proud of our strong academic performance and exceptional support that we provide to the young people of Stoke-on-Trent, Staffordshire and beyond.

We offer a broad range of A level, Vocational and T Level qualifications for school leavers which enables students to choose a suitable combination of subjects that fulfils their individual goals and career choices for after college, whatever the destination.

Students study in a purpose-built campus with state-of-the-art facilities and resources and we work hard to maintain an inclusive and vibrant community for our students and staff. Our specialist teachers and dedicated support staff love working with young adults and their focus is to make sure that all our students:

- Achieve exceptional results
- Achieve their career aspirations
- Develop high level, transferable skills

And that they achieve these whilst enjoying their time here at the college, making many new friends and getting involved in extra-curricular activities, as part of our Aspire+ programme.

We have high expectations of our students and a strong reputation for acknowledging the individuality of every student and valuing the contribution that they bring to our college community.

Ofsted stated, "Students benefit from a mature, caring environment at the college, where they are treated as individuals and supported effectively by teachers and support staff to achieve their qualifications" April 2023.

Whether you are looking for your post -16 destination or a parent/guardian, I hope that you find what you are looking for in our prospectus, you can also find more information on our website [www.stokesfc.ac.uk](http://www.stokesfc.ac.uk).

Best wishes

**LESLEY MORREY**

**PRINCIPAL**





# YOUR COLLEGE JOURNEY

**Introducing our comprehensive step-by-step guide to navigating your college adventure.**

From the moment you hit that "Apply" button to the thrilling first days as a Sixth Form College student, we've got all the insider knowledge you need!

1

## RESEARCH

Find out about what we can offer you by visiting our website [www.stokesfc.ac.uk](http://www.stokesfc.ac.uk). You can also come along to an open event and visit us in person. We also have a friendly Admissions Team ready to answer your questions. To get in touch, call **01782 854221** or email [admissions@stokesfc.ac.uk](mailto:admissions@stokesfc.ac.uk)

## OPEN EVENTS

**Tuesday 8th October 2024**

**Wednesday 20th November 2024**

**Tuesday 25th February 2025**

All Open Events take place from 5.00pm-7.00pm

2

## APPLY

Complete our online application form, visit [www.stokesfc.ac.uk](http://www.stokesfc.ac.uk)



3

## FIRST COURSE DISCUSSION

After making your application, you will be invited to a first course discussion where you will talk to one of our experts and discuss your options. This is a fantastic opportunity to ask questions which will help you to reach the right decisions.

4

## GET READY FOR SIXTH FORM

### STEP 1

#### Get Ready, Get Informed

A one-day event where you will be invited into the college and participate in subject taster sessions.

### STEP 2

#### Get Ready, Get on the Platform

Throughout the summer, our subject experts will be reaching out to you via email with newsletters full of fascinating insights and valuable information.

### STEP 3

#### Get Ready, Get Transformed

Also known as enrolment where you will be transformed into a Sixth Form College student! **See box 6 for more details.**

6

## GET READY, GET TRANSFORMED

Step 3 of our Get Ready for Sixth Form Programme (left), where you will attend your enrolment appointment after receiving your GCSE results. If your results aren't quite what you expected, please still attend this appointment so that we can discuss your options.

5

## WE'VE GOT YOU!

Throughout the summer we will keep in regular contact with you by sending monthly newsletters and preparation tasks to complete as you make the transition from high school to college.

7

## WELCOME FEST

It's official, you are now a Sixth Form College student! Before the start of year, you will attend an induction called Welcome Fest and receive your timetable.



# ASPIRE CURRICULUM

**At the Sixth Form College, we refer to the framework of your study programme as The Aspire Curriculum.**

It consists of three main components that shape your educational experience from gaining qualifications to gathering skills and experiences that will prepare you for life after college.

## FUTURES & PERSONAL PROGRESS & DEVELOPMENT SESSIONS (PPD)

We have a comprehensive Futures Programme and Personal Progress and Development Sessions (PPD) Programme aimed at equipping you with the knowledge, support, and inspiration needed to actively plan and prepare for your future. Our primary goal is to provide you with the necessary skills and qualifications that will pave the way for a confident transition into higher education, apprenticeships, or employment opportunities.

## ASPIRE+

We understand that college life is about more than just qualifications. We highly value the exceptional skills and talents that our students possess, whether in academics, sports, music, or other areas. That's why we offer a diverse range of extracurricular activities, including clubs, societies, trips, and visits. These activities enable you to develop your abilities and enhance your employability skills whilst providing a fun and social environment where you can make lasting friendships. **Head to pages 32 & 33 for more information.**

## QUALIFICATIONS

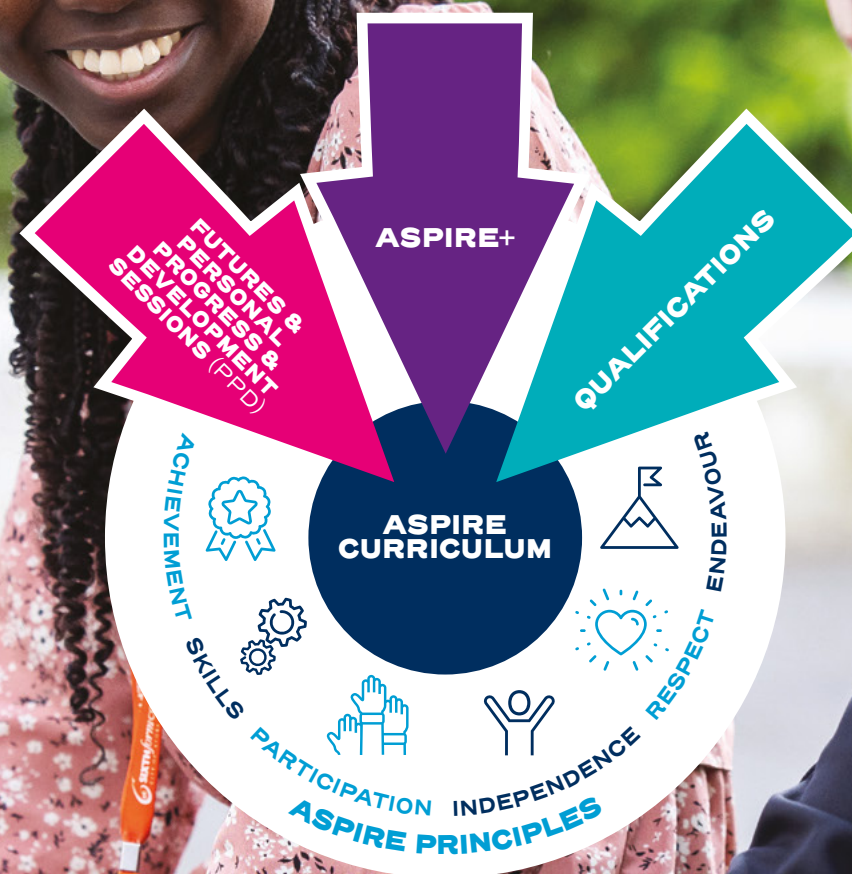
Qualifications are an important part of your college experience. They come in various forms, including academic qualifications (A Levels) vocational qualifications (BTECs) and technical qualifications (T Levels) These qualifications are what you will work towards during your time at the Sixth Form College. **Find out more on page 8.**

## ASPIRE PRINCIPLES

At the heart of the Aspire Curriculum are our Aspire Principles, which serve as the foundation for your success and future progression. These principles are represented by the acronym **ASPIRE**.

These principles are integrated throughout the Aspire Curriculum to provide you with the essential tools and mindset for success. We apply these principles to recognise and commend our students when they demonstrate any of the six principles.

**Achievement Skills Participation Independence Respect Endeavour**





# CHOOSING THE RIGHT QUALIFICATIONS FOR YOU

With more than 60 courses available it's important to choose the right qualifications for you that best support and enhance your career choices after college.

To help you enrol on a course combination that is suitable for your individual goals, staff at the college will advise and support you at every stage of your application.

## WHAT WE OFFER

### A LEVELS

If you enjoy academic subjects and thrive on the challenge of exams, our wide range of A Level subjects are perfect for you. Dive deep into your areas of interest, develop critical thinking skills, and prepare for future academic pursuits.

### BTEC/CTEC

If you thrive on hands-on experience and prefer regular coursework and practical assessments, our BTEC/CTEC courses are the perfect fit for you. Immerse yourself in real-world scenarios, gain valuable skills, and showcase your progress through practical assessments.

### T LEVELS

T Levels offer a unique blend of classroom theory, practical learning, and real workplace experience. Equivalent to three A Levels, this innovative qualification allows you to gain valuable industry placement and hands-on skills. Experience the best of both worlds with T Levels!

### LEVEL 3 FOUNDATION PROGRAMME

If you have not secured the grades needed to study A Levels, T Level or BTEC / CTEC then we have a dedicated programme designed to be a gateway to progress onto further study at the Sixth Form College. You can choose from different foundation routes in this one-year programme which has been tailored to provide you with the skills and qualifications needed to progress. **You can find out more on page 28.**

No matter what your plans are after college, whether it's entering the workforce or pursuing higher education, we're committed to providing you with the courses you need at the appropriate level to ensure your success.

We serve as the essential stepping stone on your journey, offering guidance and support tailored to your aspirations. Take a moment to explore the guide below and discover how we can help you achieve your goals.

Find out more about our High Achievers Programme on page 41.

## YOUR INTENDED PROGRESSION

Universities /  
Russell Group  
Degree  
Apprenticeship

National Universities  
Local Universities

Apprenticeships  
Employment  
Part-time  
Higher Education

Level 3 at college

## YOUR CHOICES

A Levels  
T Levels

A Levels  
T Levels  
BTEC / CTEC

A Levels  
T Levels  
BTEC / CTEC  
(or a combination  
of A Levels &  
BTEC/CTEC)

Level 3 Foundation  
Programme

## GCSE GRADES ACHIEVED OR PREDICTED

Higher grades  
9-6 across all  
subjects at GCSE

GCSE grades 9-5  
across the majority  
of subjects at GCSE

Minimum 9-4 across  
the majority of  
subjects at GCSE

3 / 4 in GCSE English  
& GCSE Maths

## GOOD TO KNOW

Most careers, university courses and apprenticeships require at least a grade 4 in GCSE Mathematics and English Language. Students who haven't secured these grades will work towards achieving them whilst at college.



# COURSE LIST

**At the Sixth Form College, you have the freedom to choose from over 60 courses, including A Levels, BTECs, or a mix of both. As the first college in the city to introduce T Levels, we offer an increasingly popular and diverse range of T Level subjects for you to explore.**

Our pathways reflect career areas, giving you an idea of courses that work well together. However, feel free to mix and match to create a unique programme of study that fits your goals and aspirations.

We're here to support you in finding the perfect course combination for your future. Let's unlock your potential and open doors to endless possibilities together!



## PATHWAY KEY

**BUSINESS, FINANCE & LAW**

**CREATIVE & PERFORMING ARTS**

**EDUCATION, SOCIETY, SPORT & HEALTH**

**HUMANITIES, LANGUAGES & LITERATURE**

**SCIENCE, TECHNOLOGY, ENGINEERING & MATHS**

## A LEVEL/ LEVEL 3

- Arabic
- Art & Design
- Biology
- Business Studies
- Chemistry
- Classical Civilisation
- Computer Science
- Dance
- Economics
- English Language
- English Literature
- Environmental Science
- French
- Further Mathematics
- Geography
- Geology
- German
- Graphic Design
- History
- Law
- Mathematics
- Media Studies
- Music
- Philosophy
- Photography
- Psychology
- Physical Education
- Physics
- Politics

- Religious Studies
- Sociology
- Spanish
- Statistics
- Textiles
- 3D Design – Product Design & Architecture

## BTEC/ VOCATIONAL/ LEVEL 3

- Applied Human Biology
- Applied Psychology
- Applied Science
- Business
- Criminology
- Dance
- Digital Games Design & Development
- Digital Games Production
- Digital Music Production
- Digital Music Performance
- Musical Theatre
- Sports Coaching & Development
- Sports & Exercise Science
- Theatre
- TV & Film Production

## T LEVEL/ LEVEL 3

- Ceramics
- Digital Cybersecurity
- Digital Software & Website Development
- Education & Early Years
- Finance
- Health
- Legal Services
- Management & Administration
- Marketing
- Media, Broadcast & Production
- Science

## LEVEL 3 FOUNDATION PROGRAMME

- Business, Finance & Law
- Creative
- Digital
- Education
- Health
- Humanities
- Science

Whilst our course list is correct at the time of publishing, we do sometimes have make changes that are outside our control.



## PATHWAYS

# BUSINESS, FINANCE & LAW

“

**I chose Sixth Form College for its wide range of subjects, particularly Law and Business, which align with my career goals perfectly.**

My course selections were based on my interests and plans for studying Law at university. The advice from open days and Get Informed sessions was invaluable in confirming my choices.

Being part of High Achievers, HE+, and Aspire+ activities has enriched my learning with online lectures, trips, and building up my super-curricular activities. These programmes also provided invaluable guidance on university applications, alternative careers, and helped me develop socially by meeting new people.

**KAH YEE CHEOW**

**Previously:** Alleyne's Academy

**Studies:** A Level Law, A Level Business and A Level Computer Science

**100%**  
of T Level Finance students  
achieved a high grade



## T-LEVELS

**NHS**

**Home Office**

**City of  
Stoke-on-Trent**

**LEEK  
Business  
Society**

Just some of our many supporters

### A LEVEL

#### BUSINESS STUDIES

**Assessed:** Exam – 100%

**Awarding Body:** Pearson Edexcel

### A LEVEL

#### ECONOMICS

**Assessed:** Exam – 100%

**Awarding Body:** Pearson Edexcel

### A LEVEL

#### LAW

**Assessed:** Exam – 100%

**Awarding Body:** OCR

### WJEC DIPLOMA

#### CRIMINOLOGY

**A Level Equivalent:** 1 A Level

**Assessed:**

External Assessment – 50%,  
Internal Assessment – 50%

**Awarding Body:** WJEC

### T LEVEL

#### LEGAL SERVICES

**A Level Equivalent:** 3 A Levels

**Occupational Specialism:** Crime,  
Criminal Justice and Social Welfare

**Assessed:**

Technical Qualification – 80%  
(100% External Assessment),  
Industry Placement – 20%

**Awarding Body:** Pearson

### T LEVEL

#### FINANCE

**A Level Equivalent:** 3 A Levels

**Occupational Specialism:**  
Financial Risk Analyst

**Assessed:**

Technical Qualification – 80%  
(100% External Assessment),  
Industry Placement – 20%

**Awarding Body:** Pearson

### T LEVEL

#### MANAGEMENT & ADMINISTRATION

**A Level Equivalent:** 3 A Levels

**Occupational Specialism:**  
Team Leadership

**Assessed:**

Technical Qualification – 80%  
(100% External Assessment),  
Industry Placement – 20%

**Awarding Body:** City & Guilds

### BTEC DIPLOMA

#### BUSINESS

**A Level Equivalent:** 2 A Levels

**Assessed:**

Combination of examination,  
external assessment and coursework

**Awarding Body:** Pearson Edexcel

### BTEC EXTENDED CERTIFICATE

#### LAW

**A Level Equivalent:** 1 A Level

**Assessed:**

External Assessment – 50%,  
Coursework – 50%

**Awarding Body:** Pearson Edexcel

### T LEVEL

#### MARKETING

**A Level Equivalent:** 3 A Levels

**Occupational Specialism:** Marketing

**Assessed:**

Technical Qualification – 80%  
(100% External Assessment),  
Industry Placement – 20%

**Awarding Body:** Pearson



## PATHWAYS

# CREATIVE & PERFORMING ARTS

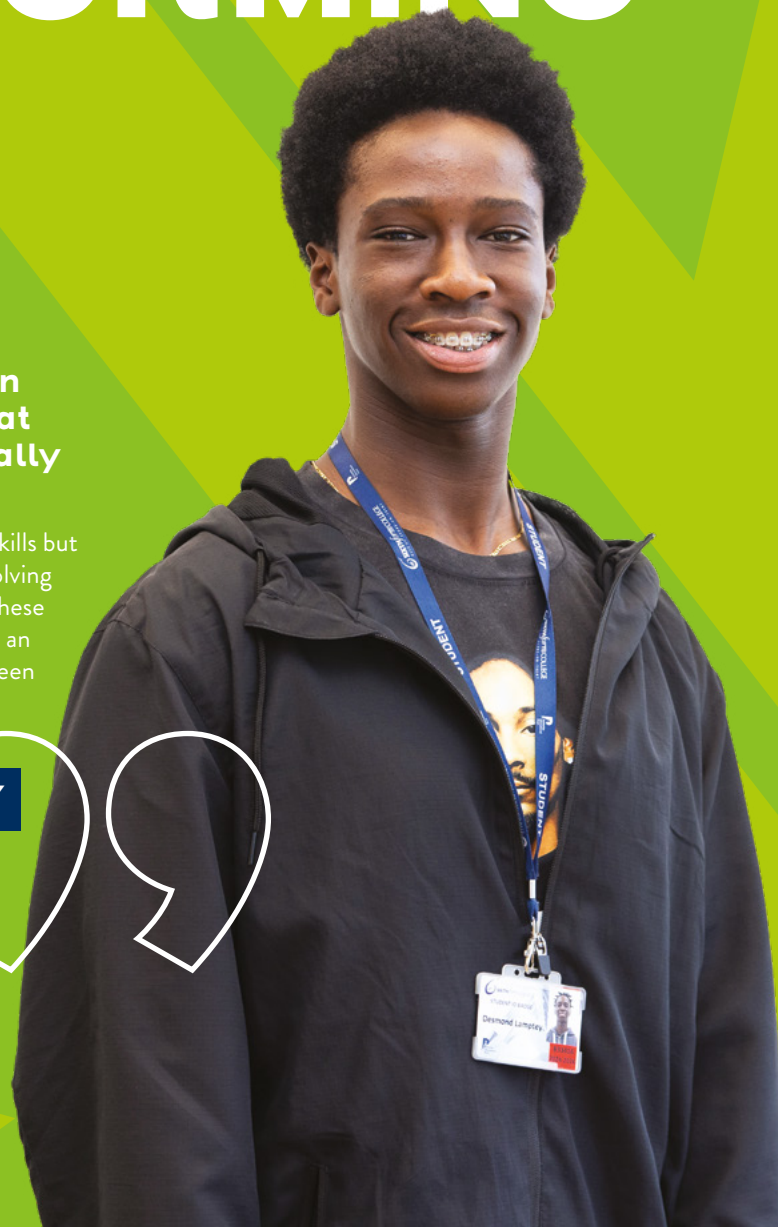
“

The courses I have chosen in this pathway are a great fit for me as I am a naturally creative person.

Together they have expanded my technical skills but also developed my creativity and problem-solving abilities further. I'm excited about applying these skills in future. After college, I aim to pursue an apprenticeship, and the careers team have been great in helping me navigate this path.

### DESMOND LAMPETY

**Previously:** The Discovery Academy  
**Studies:** BTEC Digital Games Production, A Level Graphic Design and BTEC Digital Music Production



#### A LEVEL

##### ART & DESIGN

**Assessed:**  
Externally Set Assignment – 40%,  
Coursework – 60%

**Awarding Body:** AQA

#### A LEVEL

##### DANCE

**Assessed:**  
Exam – 50%,  
Practical Assessment – 50%

**Awarding Body:** AQA

#### A LEVEL

##### MEDIA STUDIES

**Assessed:**  
Exam – 70%,  
Practical Assessment – 30%

**Awarding Body:** Eduqas

#### A LEVEL

##### MUSIC

**Assessed:**  
Exam – 40%, Performance – 35%,  
Composition – 25%

**Awarding Body:** Eduqas

#### A LEVEL

##### PHOTOGRAPHY

**Assessed:**  
Externally Set Assignment – 40%,  
Coursework – 60%

**Awarding Body:** AQA

#### A LEVEL

##### TEXTILES

**Assessed:**  
Externally Set Assignment – 40%,  
Coursework – 60%

**Awarding Body:** AQA

#### A LEVEL

##### 3D DESIGN – PRODUCT, DESIGN & ARCHITECTURE

**Assessed:**  
Externally Set Assignment – 40%,  
Coursework – 60%

**Awarding Body:** AQA

#### A LEVEL

##### GRAPHIC DESIGN

**Assessed:**  
Externally Set Assignment – 40%,  
Coursework – 60%

**Awarding Body:** Pearson Edexcel

Amazing opportunities with:







**BTEC EXTENDED  
CERTIFICATE**

**THEATRE**

**A Level Equivalent:** 1 A Level  
**Assessed:**  
Controlled Assessment – 33%,  
Coursework – 67%  
**Awarding Body:** Pearson Edexcel

**BTEC EXTENDED  
CERTIFICATE**

**TV & FILM  
PRODUCTION**

**A Level Equivalent:** 1 A Level  
**Assessed:**  
Controlled Assessment – 33%,  
Coursework – 67%  
**Awarding Body:** Pearson Edexcel

**T LEVEL**

**MEDIA, BROADCAST  
& PRODUCTION**

**A Level Equivalent:** 3 A Levels  
**Occupational Specialism:**  
Content Creation & Production  
**Assessed:**  
Technical Qualification – 80%  
(100% External Assessment),  
Industry Placement – 20%  
**Awarding Body:** Pearson

**T LEVEL**

**CERAMICS**

**A Level Equivalent:** 3 A Levels  
**Occupational Specialism:**  
Ceramics  
**Assessed:**  
Technical Qualification – 80%  
(100% External Assessment),  
Industry Placement – 20%  
**Awarding Body:** Pearson

**BTEC EXTENDED  
CERTIFICATE**

**DANCE**

**A Level Equivalent:** 1 A Level  
**Assessed:**  
Controlled Assessment – 33%,  
Coursework – 67%  
**Awarding Body:** Pearson Edexcel

**BTEC EXTENDED  
DIPLOMA**

**DIGITAL GAMES  
DESIGN &  
DEVELOPMENT**

**A Level Equivalent:** 3 A Levels  
**Assessed:**  
Controlled Assessment – 33%,  
Coursework – 67%  
**Awarding Body:** Pearson Edexcel

**BTEC EXTENDED  
CERTIFICATE**

**DIGITAL GAMES  
PRODUCTION**

**A Level Equivalent:** 1 A Level  
**Assessed:**  
Internal Assessment – 100%  
**Awarding Body:** Pearson

**BTEC EXTENDED  
CERTIFICATE**

**MUSICAL THEATRE**

**A Level Equivalent:** 1 A Level  
**Assessed:**  
Controlled Assessment – 33%,  
Coursework – 67%  
**Awarding Body:** Pearson Edexcel

**BTEC EXTENDED  
CERTIFICATE**

**DIGITAL MUSIC  
PRODUCTION**

**A Level Equivalent:** 1 A Level  
**Assessed:**  
External Assessment – 30%,  
Coursework – 70%  
**Awarding Body:** Pearson Edexcel

**BTEC EXTENDED  
CERTIFICATE**

**MUSIC  
PERFORMANCE**

**A Level Equivalent:** 1 A Level  
**Assessed:**  
External Assessment – 25%,  
Coursework – 75%  
**Awarding Body:** Pearson Edexcel

**100%**  
of BTEC Theatre,  
Musical Theatre and Dance  
students gain high grades



**100%**  
pass rate on our  
BTEC courses



## PATHWAYS

# EDUCATION, SOCIETY, SPORT & HEALTH

“

I was drawn to Sixth Form College as my older sibling attended and had a good experience and the courses offered are great.

Studying sports I am often based at Fenton Manor Sports Complex. The equipment available, the sports halls and other specialist facilities have helped to improve my knowledge and ability. I'm passionate about basketball and being part of the college team makes me feel like I'm part of a community here.

### JACK TIMBEY

Previously: St Margaret Ward Catholic Academy

Studies: BTEC Sport & Exercise Science



#### A LEVEL

### PHYSICAL EDUCATION

**Assessed:**  
Exam – 70%, Coursework – 15%,  
Practical – 15%

**Awarding Body:** Pearson Edexcel

#### BTEC EXTENDED CERTIFICATE

### APPLIED PSYCHOLOGY

**A Level Equivalent:** 1 A Level

**Assessed:**  
External Assessment – 58%,  
Internal Assessment – 42%

**Awarding Body:** Pearson Edexcel

#### BTEC DIPLOMA OR EXTENDED DIPLOMA

### SPORT & EXERCISE SCIENCE

**A Level Equivalent:**  
Diploma – 2 A Levels  
Extended Diploma – 3 A Levels

**Assessed:**  
External Assessment – 42%,  
Internal Assessment – 58%

**Awarding Body:** Pearson Edexcel

#### BTEC DIPLOMA OR EXTENDED DIPLOMA

### SPORT COACHING & DEVELOPMENT

**A Level Equivalent:**  
Diploma – 2 A Levels  
Extended Diploma – 3 A Levels

**Assessed:**  
Internal Assessment – 100%

**Awarding Body:** Pearson Edexcel

#### A LEVEL

### PSYCHOLOGY

**Assessed:** Exam – 100%

**Awarding Body:** OCR

#### A LEVEL

### SOCIOLOGY

**Assessed:** Exam – 100%

**Awarding Body:** AQA

**100%**

high grades in T level  
Education & Early Years  
& Health

**90%**

high grades in BTEC  
National Extended Diploma  
in Sport & Exercise Science

**20%**

achieved the top grade  
possible of D\*D\*D\*





## T-LEVELS



Just some of our many supporters

### CTEC EXTENDED CERTIFICATE OR EXTENDED DIPLOMA

#### HEALTH & SOCIAL CARE

**A Level Equivalent:**  
Extended Certificate – 1 A Level  
Extended Diploma – 3 A Levels  
**Awarding Body:** OCR

### T LEVEL

#### EDUCATION & EARLY YEARS

**A Level Equivalent:** 3 A Levels  
**Occupational Specialism:**  
Early Years Educator – NCFE  
**Assessed:**  
Technical Qualification – 80%  
(100% External Assessment),  
Industry placement – 20%  
**Awarding Body:** NCFE

### T LEVEL

#### HEALTH

**A Level Equivalent:** 3 A Levels  
**Occupational Specialism:**  
Supporting Healthcare  
(Adult Nursing)  
**Assessed:**  
Technical Qualification – 80%  
(100% External Assessment),  
Industry placement – 20%  
**Awarding Body:** NCFE



www.stokesfc.ac.uk

# TAKE YOUR SPORT PERFORMANCE TO THE NEXT LEVEL WITH OUR SPORTS ACADEMY



Learn how you can access  
expert coaching and first-class  
facilities by heading to page 32  
or clicking the link below.



**SPORT ACADEMY**  
DELIVERING SPORTING EXCELLENCE



## PATHWAYS

# HUMANITIES, LANGUAGES & LITERATURE

“

**In high school, I was passionate about languages and history and couldn't imagine studying anything else.**

I initially worried that focusing on two languages might limit my university options. However, a language teacher at Sixth Form College explained that knowing multiple languages always opens doors for the future. Learning this encouraged me about the opportunities ahead – more job prospects, richer travel experiences, and easier study abroad. Alongside languages, I continued with History, and I've been loving the course so much that now I want to study both History and German at university.

Outside of my studies, I'm actively involved in the Musical Theatre Society, where I play the flute, along with participating in other musical activities. These experiences have added so much to my college life and helped me grow in many ways.

### LOIS CULLEN

**Previously:** Endon High School  
**Studies:** A Level French, A Level German and A Level History



#### A LEVEL

### GEOGRAPHY

**Assessed:** Exam – 80%,  
Coursework – 20%

**Awarding Body:** Eduqas

#### A LEVEL

### GEOLOGY

**Assessed:** Exam – 100%  
+ Practical Endorsement

**Awarding Body:** OCR

#### A LEVEL

### GERMAN

**Assessed:** Exam – 100%

**Awarding Body:** Eduqas

#### A LEVEL

### HISTORY

**Assessed:** Exam – 80%,  
Coursework – 20%

**Awarding Body:** Pearson Edexcel

#### A LEVEL

### PHILOSOPHY

**Assessed:** Exam – 100%

**Awarding Body:** AQA

#### A LEVEL

### POLITICS

**Assessed:** Exam – 100%

**Awarding Body:** Pearson Edexcel

#### A LEVEL

### RELIGIOUS STUDIES

**Assessed:** Exam – 100%

**Awarding Body:** OCR

#### A LEVEL

### SPANISH

**Assessed:** Exam – 100%

**Awarding Body:** Eduqas

#### A LEVEL

### ARABIC

**Assessed:** Exam – 100%

**Awarding Body:** Pearson Edexcel

#### A LEVEL

### CLASSICAL CIVILISATION

**Assessed:** Exam – 100%

**Awarding Body:** OCR

#### A LEVEL

### ENGLISH LANGUAGE

**Assessed:** Exam – 80%,

Non-examination Assessment – 20%

**Awarding Body:** AQA

#### A LEVEL

### ENGLISH LITERATURE

**Assessed:** Exam – 80%,

Coursework – 20%

**Awarding Body:** OCR

#### A LEVEL

### ENVIRONMENTAL SCIENCE

**Assessed:** Exam – 100%

**Awarding Body:** AQA

#### A LEVEL

### FRENCH

**Assessed:** Exam – 100%

**Awarding Body:** Eduqas

The majority of HLL  
subjects achieve at least

**50%**

high grades, with some  
subjects achieving  
significantly higher rates





## PATHWAYS

# SCIENCE, TECHNOLOGY, ENGINEERING & MATHS

“

**Becoming a vet has always been my dream, so choosing the right subjects was important.**

Staff helped me understand my chosen courses better and guided me to pursue veterinary studies beyond college. Being part of the Medicine, Dentistry and Veterinary (MDV) programme has been invaluable, especially during year 12 when I had work experience for two days. As a young carer, my teachers have been incredibly supportive, understanding my commitments. This support has been so helpful in balancing my responsibilities and achieving my goals.

### KEIRA-JADE HODGETTS

**Previously:** Ormiston Meridian Academy

**Studies:** A Level Chemistry, A Level Biology, A Level Maths and A Level Further Maths



#### A LEVEL

##### BIOLOGY

**Assessed:** Exam – 100%  
+ Practical Endorsement

**Awarding Body:** OCR

#### A LEVEL

##### PHYSICS

**Assessed:** Exam – 100%  
+ Practical Endorsement

**Awarding Body:** OCR

#### A LEVEL

##### STATISTICS

**Assessed:** Exam – 100%

**Awarding Body:** Pearson Edexcel

#### A LEVEL

##### CHEMISTRY

**Assessed:** Exam – 100%  
+ Practical Endorsement

**Awarding Body:** OCR

#### A LEVEL

##### COMPUTER SCIENCE

**Assessed:**

External Assessment – 80%,  
Coursework – 20%

**Awarding Body:** OCR

#### A LEVEL

##### FURTHER MATHEMATICS

**Assessed:** Exam – 100%

**Awarding Body:** Pearson Edexcel

**Duration:** 1 year (taken in second year of study)

#### A LEVEL

##### MATHEMATICS

**Assessed:** Exam – 100%

**Awarding Body:** Pearson Edexcel





**100%**  
pass rate in T level science  
with 86% high grades

**100%**  
T level Digital Courses  
with 100% high grades

## T-LEVELS



Just some of our many supporters



### BTEC EXTENDED CERTIFICATE

#### APPLIED HUMAN BIOLOGY

**A Level Equivalent:** 1 A Level

**Assessed:**  
External Assessment – 60%,  
Coursework – 40%

**Awarding Body:** Pearson Edexcel

### BTEC EXTENDED DIPLOMA

#### APPLIED SCIENCE

**A Level Equivalent:** 3 A levels

**Assessed:**  
Coursework – 60%,  
External Assessments – 40%

**Awarding Body:** Pearson

### T LEVEL

#### SCIENCE

**A Level Equivalent:** 3 A Levels

**Occupational Specialism:**  
Laboratory Sciences – NCFE

**Assessed:**  
Technical Qualification – 80%  
(100% External Assessment),  
Industry placement – 20%

**Awarding Body:** NCFE

### T LEVEL

#### DIGITAL CYBERSECURITY

**A Level Equivalent:** 3 A Levels

**Occupational Specialism:**  
Cybersecurity

**Assessed:**  
Technical Qualification – 80%  
(100% External Assessment),  
Industry placement – 20%

**Awarding Body:** NCFE

### T LEVEL

#### DIGITAL SOFTWARE & WEBSITE DEVELOPMENT

**A Level Equivalent:** 3 A Levels

**Occupational Specialism:**  
Software Design

**Assessed:**  
Technical Qualification – 80%  
(100% External Assessment),  
Industry placement – 20%

**Awarding Body:** Pearson

## MEDICINE, DENTISTRY, VETERINARY (MDV) PROGRAMME

Join this highly successful programme, with a bespoke timetable to experience opportunities including work experience and placements, tailored sessions focusing on progression and a plethora of guest speakers and alumni visits to support you in achieving your dreams of entering these professions.

## MATHS, ENGINEERING & COMPUTING (MEC) PROGRAMME

A bespoke programme of complimentary subjects which provide the widest choice of careers in these fields. Enjoy participation in real life engineering projects, team challenges, delving into the depths of mathematical analysis and reasoning to support your progression to highly competitive and in demand higher education courses and professions.



# LEVEL 3 FOUNDATION PROGRAMME

“

I was drawn to Sixth Form College by the impressive building and the friendliness of the teachers.

Staff provided valuable insights into career progressions, which helped me to make the right choices. Most importantly, the teachers have played a significant role in boosting my confidence. Their support and encouragement have made a real difference in my learning journey. I'm grateful for the positive environment that has allowed me to thrive and grow academically and personally.

## TEDDY NATHAN NTARE

**Previously:** International School  
**Studies:** GCSEs in Maths, English and Science

**PRIZE PRESENTATION  
EVENING 2024 WINNER**  
Principals Prize for  
a Level 2 Student



**If your GCSE's didn't quite go to plan or you have been previously home-schooled and need formal qualifications, our Level 3 Foundation Programme will give you the qualifications and skills you need to progress into your chosen pathway.**

The Level 3 Foundation Programme is specifically designed to develop the skills, experience, knowledge and behaviours to support progression onto a Level 3 programme of study. This programme is targeted at students who are not ready to start Level 3 but have the potential to progress onto a Level 3 programme of study following a tailored preparation programme. It is designed to support your success in achieving 4+ in both English and Maths, alongside our Foundation Programme to get you ready for the Level 3 programme of study the year after.

### BUSINESS & FINANCE

**GCSE Equivalent:** 2 GCSE's minimum

**Assessed:** Various

**Awarding Body:** Various

### CREATIVE

**GCSE Equivalent:** 2 GCSE's minimum

**Assessed:** Various

**Awarding Body:** Various

### DIGITAL

**GCSE Equivalent:** 2 GCSE's minimum

**Assessed:** Various

**Awarding Body:** Various

### EDUCATION

**GCSE Equivalent:** 2 GCSE's minimum

**Assessed:** Various

**Awarding Body:** Various

### HEALTH

**GCSE Equivalent:** 2 GCSE's minimum

**Assessed:** Various

**Awarding Body:** Various

### HUMANITIES

**GCSE Equivalent:** 2 GCSE's minimum

**Assessed:** Various

**Awarding Body:** Various

### SCIENCE

**GCSE Equivalent:** 2 GCSE's minimum

**Assessed:** Various

**Awarding Body:** Various

You will also study  
GCSE Maths and/or  
GCSE English

## CORE GCSE FOUNDATION ROUTE

If you haven't had the chance to study for GCSE's yet — whether you're an international student without equivalent qualifications, home schooled, or someone who took a break from education but is now ready to pursue full time learning, this is the pathway for you. You will study either GCSE's in Biology, Chemistry, Physics, English and Maths or GCSE's in Classics, Citizenship, English and Maths. Progression to Level 3 will be based on obtaining 4+ GCSE's at grade 4+, and having attendance of 90%+.



# 6 REASONS TO CHOOSE SIXTH FORM COLLEGE

**At Sixth Form College we're more than just a place to earn qualifications.**

We're committed to nurturing your potential and preparing you for a successful future. Here are six compelling reasons why you should choose us.

1

## MORE THAN QUALIFICATIONS

Beyond academic achievement, we focus on developing skills and attributes that empower you to excel in every aspect of life.

2

## WE GET RESULTS

Our track record speaks for itself. Year after year, our students achieve outstanding results, setting them on the path to their desired careers and further education.

3

## CARING COMMUNITY

Join a supportive community where every student is valued. We promote an inclusive environment that encourages personal growth and well-being.

4

## BROAD RANGE OF COURSES

Choose from a diverse range of courses tailored to meet your interests and career aspirations. Whatever you're passionate about, we have something for you!

5

## HIGH QUALITY TEACHING IN STATE-OF-THE-ART FACILITIES

Experience top-notch education delivered by passionate teachers in modern, well-equipped facilities designed to enhance your learning experience.

6

## FUTURE SUCCESS

Our ultimate goal is your success. We provide the tools, opportunities, and guidance you need to achieve your dreams and thrive in an ever-changing world.



# MORE THAN QUALIFICATIONS

All of our students develop skills beyond the classroom which are essential for their personal and professional growth.

## ASPIRE+

Aspire+ is a key part of our Aspire Curriculum (see page 6), giving you the chance to gain valuable skills for both academic success and your future career plans. The programme offers a range of clubs, societies, and tailored activities to help you grow, develop new skills, and reach your full potential. It also empowers you to actively contribute to our vibrant learning community.

At college, you'll have the opportunity to take part in activities that build your confidence, boost your employability skills, and help you make lasting friendships, including:

- International Enrichment Trips
- Duke of Edinburgh
- Sports Enrichment
- Clubs & Societies
- Music Making
- Student Governing Body



## ASPIRE HIGHER

We will challenge you to aim high in many ways during your time with us, and for academically talented students we offer the following programmes to help you to excel:

- High Achievers Programme
- HE+ Programme
- Extended Project Qualification

## SPORT ACADEMY

Our Sport Academy aims to provide more students with sporting opportunities alongside academic study with our two key elements; Performance Academies and Elite Scholarship Programme. We can offer both competitive sport and coaching opportunities across various disciplines and deliver sporting excellence for interested students.

- Performance Academies
- Elite Scholarship Programme

## FEMALE & MALE FOOTBALL

IN ASSOCIATION WITH  
STOKE CITY FOOTBALL CLUB

This unique partnership with Stoke City Football Club will provide aspiring young women and men, aged 16-19, studying any course at the Sixth Form College with the opportunity to participate in high-quality football training and competitive matches, regardless of their chosen field of study.







# WE GET RESULTS

The Aspire Curriculum means that our graduates progress onto outstanding destinations. Including competitive Apprenticeships, Employment, Oxbridge and other prestigious universities to study desirable subjects such as Medicine.

## ACADEMIC A LEVEL

# 99%

Pass rate across all college A Level courses with almost 50% of students achieving A\*, A or B grades.

## VOCATIONAL BTEC/CTEC

# 100%

Pass rate across all vocational subjects. 70% of students studying a vocational course achieving high grades.

## TECHNICAL T LEVEL

# 100%

Pass rate across all T Level courses with 92% of students achieving the equivalent of higher grades A\* to B.

# 2

# 20%

Of all A Level grades awarded were grade A\* or A

# 3/4's

Of A level results were A\*- C (12% higher than 2019)



### MADELEINE HOLLAND

**Results:** A Level History A, Business Studies A and Sociology A  
**Next steps:** University of Liverpool to study Marketing



### CASSIDY LOVATT

**Results:** T-Level Digital Production, Design and Development – Distinction  
**Next steps:** Liverpool John Moores University to study Software Engineering



### SAMUEL CLARKE

**Results:** A Level Biology A, Chemistry A and Maths A  
**Next steps:** Keele University to study Medicine



### RUBI MACHIN

**Results:** A Level Biology A\*, Chemistry A\* and Maths A\*  
**Next steps:** Keele University to study Medicine



### TOM BARNETT

**Results:** BTEC Sport and Exercise Science Extended Diploma – Triple Distinction\* (D\*D\*D\*)  
**Next steps:** Cardiff Metropolitan University to study Sports Strength and Conditioning, Rehabilitation and Massage



### HONEY FINLEY

**Results:** A Level English Literature A, Business Studies B and BTEC Performance (Acting) Distinction  
**Next steps:** Falmouth University to study Musical Theatre



### MARIA COLLINS

**Results:** BTEC Applied Science – Triple Distinction\* (D\*D\*D\*)  
**Next steps:** Taking a gap year with plans to go to university to study Veterinary Nursing



### WILLIAM GARDINER

**Results:** BTEC Sport and Exercise Science National Diploma – Distinction Merit (DM), A Level History C  
**Next steps:** Joining the Police through a Degree Apprenticeship



### POPPY GROVES

**Results:** A Level Further Maths A\*, Chemistry A\*, Business A\* and Maths A  
**Next steps:** Leeds University to study Natural Sciences



### LEWIS STEVENSON

**Results:** A Level Photography A, BTEC Film and TV Production – Double Distinction (DD)  
**Next steps:** Salford University to study Film Production



### GAMUCHIRAI MKUHLANI

**Results:** A Level Sociology B, CTEC Health and Social Care Diploma – Double Distinction (DD)  
**Next steps:** University of Manchester to study Mental Health Nursing



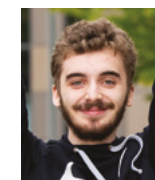
### OLIVIA ALDER

**Results:** T Level Health – Distinction  
**Next steps:** NHS Apprenticeship as a Healthcare Assistant at Royal Stoke University Hospital to become a qualified Nurse



### OLIVIA PUGH

**Results:** CTEC Health and Social Care Extended Diploma – Triple Distinction\* (D\*D\*D\*)  
**Next steps:** Staffordshire University to study Paediatric Nursing



### DANIEL JARRETT

**Results:** A Level Further Maths A, Biology A, Chemistry B, Maths B  
**Next steps:** Staffordshire University to study Forensic Investigation



### BETHANY STANDEVEN

**Results:** A Level Law – A\*, English Language – C, Sociology – B  
**Next steps:** Studying Law LLB at Staffordshire University





# CARING COMMUNITY

We want all our students to enjoy their time at college and we are committed to providing a high level of personalised support, whether that is with your studies, your health and wellbeing or your finances.

Our 'one stop' award winning Student Services team are dedicated to providing friendly and professional advice and support.

All our students have access to:

- A Progress Coach
- Safeguarding Support and Advice
- Careers and Employability Guidance
- Mental Health and Wellbeing Support
- Financial Support

Support is also offered to students with learning difficulties or disabilities, students with additional caring responsibilities, student who are lone living and overseas students.

## PERSONAL PROGRESS & DEVELOPMENT

Our Personal Progress and Development sessions have been designed to complement your studies and develop your personal skills. The compulsory 90-minute weekly sessions will prepare you for both your current academic studies and your future progression after college. These are run by our Progress Coaches who are here to support and guide you through your time with us. They will also see you to individually to check that you are progressing and achieving your potential through our Progress Reviews.



3

# BROAD RANGE OF COURSES

4

Choosing from over 60 courses, you will pick a unique programme of study.

Choose from A Levels, BTEC's or indeed both. We also offer the T Level qualification and a Level 3 Foundation Programme so that we can offer a course combination that works for you and your future.

“

At Sixth Form College, I've appreciated the wide range of courses available, which allowed me to mix subjects that fit my interests perfectly.

Hosting National Youth Theatre auditions here has been a great chance to explore my passion for drama in a professional setting. Outside of classes, I've thrived as president of the Chess Club and in the Creative Writing Society. These roles have developed my skills and helped me make new friends, enriching my college experience both academically and socially.

## LEWIS MCARDLE

Previously: The Excel Academy

Studies: A Level English Literature, A Level Classical Civilisation and BTEC Theatre





# HIGH QUALITY TEACHING

## IN STATE-OF-THE-ART FACILITIES

The Sixth Form College has been designed to give you a learning environment in which you can thrive, create your future, and feel comfortable in being who you are.

Whether you need a quiet place to complete your coursework, a studio to practice your dance routine in, or a social place to grab a bite to eat, there's a space for you!

- Learning Resource Centres including quiet study areas and learning pods.
- High quality dance studio and performing spaces.
- Top class sports facilities based at Staffordshire University and Fenton Manor Sports Complex.
- Science Centre with superior laboratories.
- Power up your learning experience with easy access to laptops through our Lapsafe units and long-term loan offer.
- Access to high-spec internet for personal devices.
- Discover a realm of cutting-edge education through our mind-expanding VR technology.



### NEW! PRODUCTION STUDIO

Our brand-new and state-of-the-art Production Studio is designed for live TV! Explore the thrilling world of live broadcasting with cutting-edge technology, professional-grade equipment, and an inspiring creative space. Whether you're aspiring to be in front of the camera or behind the scenes, our Production Studio offers hands-on experience and the chance to bring your ideas to life in real-time.



### DIGITAL CENTRE

Introducing our cutting-edge Digital Centre, equipped with well-resourced computer labs and high-end servers! Here, you'll find the latest technology at your fingertips, providing an exceptional environment for learning, innovation, and creativity. Whether you're diving into complex coding projects, exploring digital design, or analysing data, our Digital Centre offers everything you need to succeed. Join us and discover a world of opportunities in the heart of digital excellence!



### THE CENTRE FOR MEDICAL & HEALTHCARE SCIENCE

Discover limitless opportunities at our cutting-edge Centre for Medical and Healthcare Science, where seamless transitions between theory and practice redefine learning. Elevate your skills with our immersive rooms and simulated equipment, empower your future, and join a community committed to excellence in shaping the future workforce.



6

# FUTURE SUCCESS

**Our creative and exciting Futures Programme is designed to provide all students with the absolute best opportunities and bespoke support to ensure that you achieve your maximum potential in your chosen subjects and career.**



This impressive programme consists of:

- A dedicated Futures zone with a team of knowledgeable advisers and well stocked with careers information.
- An exciting and comprehensive careers programme embedded into Personal Progress and Development Sessions (PPD) and curriculum classes including: information and advice on applying to university, personal statements and preparing for the world of work such as CV support and mock interviews.
- Engaging curriculum content designed to identify and develop relevant employability skills.
- Career-relevant independent study activities embedded into your programme of study.
- Personal and bespoke advice and guidance with a professionally trained impartial Careers and Progression Advisor.
- Help with finding your future through Unifrog: A computer software programme that is a one-stop shop for careers information.
- Multiple annual events supported by universities and employers plus a wide variety of in-college Higher Education and employers talks throughout the year.
- Creative and stimulating immersion days with a range of employers. Undertake relevant work experience or volunteering supported by the Progress Coach Team and the Futures Team
- We will keep in touch with you regularly with information about advertising apprenticeships, employment opportunities, university taster courses and masterclasses.

To find out more visit the Futures Zone located in the First Floor Pod or visit [www.stokesfc.ac.uk](http://www.stokesfc.ac.uk)

## ASPIRE HIGHER WITH OUR HIGH ACHIEVERS PROGRAMME

Crafted by our experienced college staff, who graduated from some of the UK's top universities, our High Achievers Programme is designed to support our most academically talented students on their path to prestigious UK and international universities.

### SPECIALISED SUPPORT & MENTORING

The programme provides personalised mentoring, guidance, and support from professionals with first-hand knowledge of university admissions processes and tests. Students will benefit from individual attention to navigate the complexities of university applications.

### PREPARATION FOR TOP INSTITUTIONS

Each year, students with exceptional skills and ambitions join the High Achievers Programme. They receive thorough preparation to strengthen their applications to top national and international universities, ensuring they stand out in competitive fields.

### ACCESS TO PRESTIGIOUS UNIVERSITIES

Studying at prestigious institutions offers unparalleled access to outstanding teaching, research opportunities, and state-of-the-art facilities, enriching students' academic journey and preparing them for success in a competitive job market.

### INSPIRING GUEST SPEAKERS

Students engage with guest speakers from leading universities and companies, gaining valuable insights and inspiration to shape their academic and career aspirations.

### MATHS, ENGINEERING & COMPUTING (MEC) PROGRAMME

The MEC Programme focuses on subjects such as maths, engineering, computing, chemistry, product design, and architecture. Students engage in real-world projects and competitions like the Institute of Civil Engineers (ICE) team challenges, receive career advice, and explore university choices and degree apprenticeships.

### THE MEDICINE, DENTISTRY & VETERINARY (MDV) PROGRAMME

Our MDV Programme is renowned for its success in preparing students for their future careers. Featuring a customised timetable, the programme offers opportunities for work experience and placements. Tailored sessions focus on academic progression, ensuring students are well-equipped for the rigorous demands of professional training. Additionally, a diverse array of guest speakers and alumni visits enrich the learning experience, providing valuable insights and guidance to support students in achieving their aspirations of entering these esteemed professions.



# THE FUTURE IS GREEN

**We want to protect our planet and your future, so we are continually looking at ways in which we can operate in a greener and more sustainable way.**

Here's what we are doing:

- We're actively working to reduce energy consumption by replacing all lights with energy-efficient LED models. We've allocated an annual budget for the LED upgrades and new energy-efficient, low-heat IT equipment, ensuring the continuation of our sustainability efforts.
- Students and staff can help; with easy access to recycling points with multiple stations around college grounds and buildings.
- We are thoughtful when using paper and aim to become as paperless as possible.
- To encourage staff and students to use shared transport and reduce their carbon footprint, we are conveniently located next to many bus routes, the train station and roads with cycle routes.
- We use local suppliers when we have the opportunity.
- We have installed six electric vehicle charging points on site to support our commitment to sustainability and encourage the use of eco-friendly transport.
- We have introduced new bike racks to promote sustainable travel options, making it easier for students and staff to choose cycling as a greener way to commute.

## THIS IS WHAT WE'RE ASPIRING TO

- To save trees, we are reducing the size and number of pages in our prospectus, printing fewer copies and using paper sourced from designated wood harvested from forests that are responsibly managed, socially beneficial, environmentally conscious, and economically viable.
- We encourage the use of our NEW digital prospectus as an eco-friendlier option.
- Our new Medical and Healthcare Science extension is rated very good in the national BREEAM accreditation.
- To increase our existing energy production on-site; we have installed a solar array on our new extension.

## STAY INFORMED

Click the link to explore our website!

[www.stokesfc.ac.uk](http://www.stokesfc.ac.uk)



## OPEN EVENTS

**Tuesday 8th October 2024**

**Wednesday 20th November 2024**

**Tuesday 25th February 2025**

All Open Events take place from 5.00pm–7.00pm



**T: 01782 854221**

**E: [admissions@stokesfc.ac.uk](mailto:admissions@stokesfc.ac.uk)**

**W: [www.stokesfc.ac.uk](http://www.stokesfc.ac.uk)**



facebook.com  
**/SOT6thformcollege**



twitter.com  
**/SOT6FC**



youtube.com  
**/SOT6FC**



instagram.com  
**/sot6fc**



The paper we use has been sourced from designated wood harvested from forests that are responsibly managed, socially beneficial, environmentally conscious and economically viable