

16-19 PROSPECTUS 2026

WELCOME

Welcome to the City of Stoke-on-Trent Sixth Form College Prospectus for 2026.

We're so pleased you're considering the City of Stoke-on-Trent Sixth Form College as the next step in your journey. No matter if you already know where you're headed or you're still exploring your options, we're here to help you shape a future that's right for you.

At our college, you'll find a wide range of A Level, Vocational, and T Level courses designed to match your interests, strengths, and ambitions. Whether your goal is university, an apprenticeship, or the world of work, we'll help you build a programme that fits your path.

You'll be learning in a modern, purpose-built campus with fantastic facilities and resources. What really makes our college special is the people. Our talented teachers and support staff are here to guide, challenge, and inspire you. They'll help you:

- Achieve excellent results
- Reach your career goals
- Build valuable, transferable skills for life beyond college

Their dedication is second to none, and I'm constantly inspired by the difference they make in students' lives every single day.

Just as importantly, I'm incredibly proud of the student community you could be part of. Our students bring energy, creativity, and ambition to everything they do. It's truly inspiring to see what they go on to achieve, both in and beyond the classroom. From gaining places at top

universities to starting exciting careers, and from personal growth to lifelong friendships, life at our college is full of opportunity.

Alongside your studies, you'll have the chance to get involved in our Aspire+ programme—offering clubs, activities, and experiences that help you grow, have fun, and make the most of college life.

We set high standards, but we also recognise that every student is unique. We'll support you as an individual and celebrate the contribution you bring to our college community.

As a proud member of the Potteries Educational Trust (PET), we work closely with local schools, colleges, and universities to share expertise to create even more opportunities for our students. This partnership strengthens the support, resources, and experiences available to you—ensuring that your journey here connects you to a wider community committed to educational excellence across the city and beyond.

We hope this prospectus gives you a real sense of what life at our college is like. If you want to find out more, head over to our website: www.stokesfc.ac.uk

We can't wait to see what you'll achieve.

Warm wishes, Lesley.



LESLEY MORREY

Principal

CONTENTS

- | | |
|---|---|
| ▶ 4 Begin. Belong. Beyond. | ▶ 26 Science, Technology, Engineering & Maths |
| ▶ 6 Your College Journey | ▶ 30 Level 3 Foundation Programme |
| ▶ 8 Choosing The Right Qualifications For You | ▶ 32 Aspire Curriculum |
| ▶ 10 Choosing Your Courses | ▶ 34 More Than Qualifications |
| ▶ 12 Your Path, Your Way | ▶ 36 Aspire Higher |
| ▶ 14 Business, Finance & Law | ▶ 37 A Caring Community |
| ▶ 16 Creative & Performing Arts | ▶ 38 State-Of-The-Art Facilities |
| ▶ 20 Education, Society, Sport & Health | ▶ 40 Future Success |
| ▶ 24 Humanities, Languages & Literature | ▶ 42 Results |

WHAT IS A SIXTH FORM COLLEGE?

A Sixth Form College is a specialist environment for students aged 16 to 19, focused on supporting the next stage of your educational journey.

Sixth Form Colleges are designed specifically for 16-19 year olds. This means you'll be studying alongside people your own age, in an environment created to support your stage of learning.

If you're currently in a school that also has a sixth form, moving to a Sixth Form College can give you a wider choice of courses to better match your goals, as well as greater freedom to take ownership of your studies. One of the biggest differences you'll notice is the atmosphere – there's no uniform, and you'll have more independence in how you manage your time. You'll be treated like a young adult, with the flexibility to make your own choices, while still receiving the guidance and encouragement you need to succeed.

At our college, you'll also benefit from a vibrant student community, personalised support, and plenty of opportunities to get involved in clubs, enrichment activities, and leadership roles – all designed to help you grow both academically and personally. Most of our students progress on to university, employment, or apprenticeships. We also provide higher education courses, giving learners a valuable pathway into a full degree.



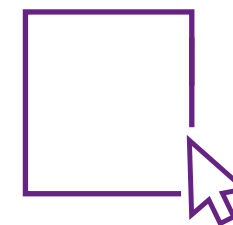
OPEN EVENTS

**Wednesday 8th
October 2025**

**Tuesday 18th
November 2025**

**Thursday 12th
March 2026**

All Open Events take place
from 5.00pm-7.00pm



Begin.

Belong.

Beyond.

FROM BEGINNING TO BEYOND

Starting college is the beginning of a new chapter. It's your chance to try new subjects, meet new people, and start shaping your future. At the City of Stoke-on-Trent Sixth Form College, we'll support you from your very first day, help you feel part of a vibrant community, and give you the skills and confidence to go further than you ever thought possible.



Begin.

We'll guide you through every step, helping you to explore your college journey, choose the right courses, and shape a pathway that's personal to you.

- > Your College Journey
- > Choosing the Right Qualification for You
- > Planning Your Course Choices
- > Your Path, Your Way



Belong.

College is more than the subjects you study – it's about feeling part of something bigger. At the City of Stoke-on-Trent Sixth Form College, you'll join a friendly and inclusive community where every student is supported to do their best. You'll be challenged to aim higher, develop new skills, and take part in opportunities beyond the classroom. With outstanding teaching, dedicated support, and a culture that values every individual, you'll quickly find where you belong.

- > ASPIRE Curriculum
- > More Than Qualifications
- > Aspire Higher
- > Student Finance
- > Mental Health & Wellbeing
- > Safeguarding Support & Advice
- > State-Of-The-Art Facilities



Beyond.

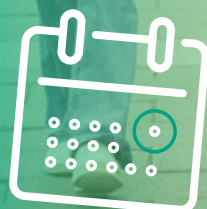
Your time at college is just the beginning. The knowledge, skills, and confidence you gain here will prepare you for life after Sixth Form – whether that's progressing to university, starting an apprenticeship, or moving straight into employment. With strong results, real-world experiences, and personalised guidance, you'll leave college ready to succeed and go beyond your own expectations.

- > Personal Progress & Development Sessions
- > The Futures Programme
- > We Get Results

YOUR COLLEGE JOURNEY

Introducing our comprehensive step-by-step guide to navigating your college adventure.

From the moment you hit that "Apply" button to the thrilling first days as a Sixth Form College student, we've got all the insider knowledge you need!



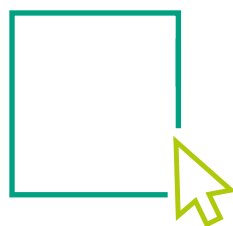
**OPEN
EVENTS**

**Wednesday 8th
October 2025**

**Tuesday 18th
November 2025**

**Thursday 12th
March 2026**

All Open Events take place
from 5.00pm-7.00pm



1 RESEARCH

Find out about what we can offer you by visiting our website www.stokesfc.ac.uk

You can come along to an open event and visit us in person. We also have a friendly Admissions Team ready to answer your questions. To get in touch, call **01782 854221** or email admissions@stokesfc.ac.uk

2

APPLY

Complete our online application form, visit www.stokesfc.ac.uk



3

FIRST COURSE DISCUSSION

After making your application, you will be invited to a First Course Discussion where you will talk to one of our experts and discuss your application. This is a fantastic opportunity to ask questions which will help you to reach the right decisions.

4

GET READY, GET INFORMED

A one-day event where you will be invited into the college and participate in taster sessions of the subjects you have applied for (try before you buy!)

5

WE'VE GOT YOU!

Over the summer months, we'll stay in regular contact with newsletters, giving you all the updates, guidance, and tips you need as you prepare for college.

6

GET READY, GET ON THE PLATFORM

Throughout the summer, our subject experts will be reaching out to you via email with newsletters full of fascinating insights and valuable information.

7

GET READY, GET TRANSFORMED

After receiving your GCSE results, you will attend your enrolment appointment. Whatever your results, please make sure you still attend so that we can discuss your options. Once enrolled, it's official – you will be a Sixth Form College student! Before the start of term, you will take part in our Welcome Fest induction and receive your timetable.



CHOOSING THE RIGHT QUALIFICATIONS FOR YOU

With more than 60 courses available it's important to choose the right qualifications for you that best support and enhance your career choices after college.

To help you enrol on a course combination that is suitable for your individual goals, staff at the college will advise and support you at every stage of your application.

CHOOSE EITHER:



OR EVEN A MIXTURE OF:



WHAT WE OFFER

A LEVELS

If you enjoy academic subjects and thrive on the challenge of exams, our wide range of A Level subjects are perfect for you. Dive deep into your areas of interest, develop critical thinking skills, and prepare for future academic pursuits.

T LEVELS

T Levels offer a unique blend of classroom theory, practical learning, and real workplace experience. Equivalent to three A Levels, they are a full-time programme of study designed to help you gain valuable industry placement and hands-on skills. Experience the best of both worlds with T Levels!

BTEC

If you thrive on hands-on experience and prefer regular coursework and practical assessments, our BTEC courses are the perfect fit for you. Immerse yourself in real-world scenarios, gain valuable skills, and showcase your progress through practical assessments.

LEVEL 3 FOUNDATION PROGRAMME

We have a dedicated programme designed to be a gateway to progress onto further study at the Sixth Form College. You can choose from different foundation routes in this one-year programme which has been tailored to provide you with the skills and qualifications needed to progress. **You can find out more on page 30.**

No matter what your plans are after college, whether it's entering the workforce or pursuing higher education, we're committed to providing you with the courses you need at the appropriate level to ensure your success.

We serve as the essential stepping stone on your journey, offering guidance and support tailored to your aspirations. Take a moment to explore the guide below and discover how we can help you achieve your goals.

Find out more about our High Achievers Programme on page 36

Higher grades 9-6 across all subjects at GCSE

GCSE grades 9-5 across the majority of subjects at GCSE

Minimum 9-4 across the majority of subjects at GCSE

3 / 4 in GCSE English and/or GCSE Maths

A Levels
T Levels

A Levels
T Levels
BTEC

A Levels
T Levels
BTEC/CTEC
(or a combination of A Levels & BTEC)

Level 3
Foundation
Programme

Universities /
Russell Group
Degree
Apprenticeship

National
Universities
Local
Universities

Apprenticeships
Employment
Part-time
Higher Education

Level 3
at college

GCSE GRADES Achieved or Predicted

YOUR CHOICES

YOUR INTENDED PROGRESSION

GOOD TO KNOW

Most careers, university courses and apprenticeships require at least a grade 4 in GCSE Mathematics and English Language. Students who haven't secured these grades will work towards achieving them whilst at college.

PLANNING YOUR COURSE CHOICES

“

I've always wanted to study English Literature at university, so choosing it as an A Level was an easy decision. But I also have a passion for performing arts, and being able to combine a BTEC with my A Level courses means I can pursue both interests without compromise.



CALEB MILLER

Previously: Thistley Hough Academy

Studies: A Level English literature, A Level Philosophy and BTEC Musical Theatre

”

Create your own unique programme of study:

CHOOSE EITHER:



OR EVEN A MIXTURE OF:



MIX & MATCH

At The Sixth Form College, you have a unique opportunity to mix and match from over 60 courses, combining A Levels and BTECs in a way that suits your strengths and ambitions!

What sets us apart is the chance to combine both academic and vocational qualifications within a single programme. We're here to help you build the perfect combination to unlock your potential and open doors to a wide range of opportunities.

We also offer T Levels and a Level 3 Foundation Programme, providing even more flexibility to create a personalised study plan designed around your future goals.



YOUR PATH, YOUR WAY

Our courses are organised into five progression pathways. Reflecting career areas, our pathways show which courses typically work well together. However, you can mix and match your courses across the pathways and combine BTECs and A levels to create a unique programme of study that fits your goals and aspiration.

Progression Pathway Key



MIX & MATCH

A Levels and BTECs across any pathway!

A LEVEL

Arabic

Art & Design

Biology

Business Studies

Chemistry

Classical Civilisation

Computer Science

Dance

Economics

English Language

English Literature

Environmental Science

French

Further Mathematics

Geography

Geology

German

Graphic Design

History

Law

Mathematics

Media Studies

Music

Philosophy

Photography

Physical Education

Physics

Politics

Psychology

Religious Studies

Sociology

Spanish

Statistics

Textiles

3D Design – Product Design & Architecture

Sports Coaching & Development

Sports & Exercise Science

TV & Film Production

T LEVEL

Craft & Design

Digital Cybersecurity

Digital Software & Website Development

Education & Early Years

Education (Teaching Assistant)

Finance

Health

Legal Services

Marketing

Media, Broadcast & Production

Science

BTEC / Vocational

Applied Science

Business

Criminology

Dance

Digital Games Design & Development

Digital Games Production

Digital Music Production

Health & Social Care

Law

Medical Science

Mental Health: Individuals & Society

Music Performance

Musical Theatre

Level 3 Foundation Programme

Business, Finance & Law

Creative

Digital

Education

Health

Humanities

Science

BUSINESS, FINANCE & LAW

86%

achieved grades
A*-C in Criminology

I'd been invited to the Sixth Form a few times while I was still in high school, and I got to explore Law and Criminology in more detail. After attending an open event, I felt confident this was where I wanted to study – the support and facilities stood out straight away. I have had the opportunity to take part in lots of trips, including a visit to London for Law, which was a brilliant experience. The college makes learning feel real – and the support from staff has been amazing.

SUMMER GOODWIN

Previously: The Discovery Academy

Studies: A Level Law, WJEC Criminology and A Level Psychology

T-LEVELS

NHS



GODDARD DUNBAR
Property & Facilities Services

LEEN VALLEY
Council

stevens

Business Lodge

Just some of our many employer partners

A Level

BUSINESS STUDIES

Assessed: Exam – 100%

Awarding Body: Pearson Edexcel

A Level

ECONOMICS

Assessed: Exam – 100%

Awarding Body: Pearson Edexcel

A Level

LAW

Assessed: Exam – 100%

Awarding Body: OCR

WJEC Diploma

CRIMINOLOGY

A Level Equivalent: 1 A Level

Assessed:

External Assessment – 50%,
Internal Assessment – 50%

Awarding Body: WJEC

T Level

LEGAL SERVICES

A Level Equivalent: 3 A Levels

Occupational Specialism: Crime,
Criminal Justice and Social Welfare

Assessed:

Technical Qualification – 80%
(100% External Assessment),
Industry Placement – 20%

Awarding Body: Pearson

T Level

FINANCE

A Level Equivalent: 3 A Levels

Occupational Specialism:
Financial Risk Analyst

Assessed:

Technical Qualification – 80%
(100% External Assessment),
Industry Placement – 20%

Awarding Body: Pearson

T Level

MARKETING

A Level Equivalent: 3 A Levels

Occupational Specialism: Marketing

Assessed:

Technical Qualification – 80%
(100% External Assessment),
Industry Placement – 20%

Awarding Body: Pearson

BTEC Diploma

BUSINESS

A Level Equivalent: 2 A Levels

Assessed:

Combination of examination,
external assessment and coursework

Awarding Body: Pearson Edexcel

BTEC Extended Certificate

LAW

A Level Equivalent: 1 A Level

Assessed:

External Assessment – 58%,
Coursework – 42%

Awarding Body: Pearson Edexcel

98%

achieved high
grades in BTEC
Business Studies

CREATIVE & PERFORMING ARTS

“

I always knew I wanted to study Theatre and Music – they’re where I feel most at home. I added Classics because I’ve always loved Greek mythology, so it was the perfect mix. The theatre room and dance studio feel really professional – they create the kind of environment that pushes you to do your best. The CAP Pod is also a great place to study and get into the creative mindset. Performing in Legally Blonde for the college is one of the best experiences I’ve had whilst here.



TRAVIS LOSKA

Previously: The Kings CofE

Studies: BTEC Theatre, BTEC Music Performance and A Level Classical Civilisation

”

Amazing opportunities with:

national youth theatre



A Level **ART & DESIGN**

Assessed:
Externally Set Assignment – 40%,
Coursework – 60%

Awarding Body: AQA

A Level **DANCE**

Assessed:
Exam – 50%,
Practical Assessment – 50%

Awarding Body: AQA

A Level **GRAPHIC DESIGN**

Assessed:
Externally Set Assignment – 40%,
Coursework – 60%

Awarding Body: AQA

A Level **MEDIA STUDIES**

Assessed:
Exam – 70%,
Practical Assessment – 30%

Awarding Body: Eduqas

A Level **MUSIC**

Assessed:
Exam – 65%,
Coursework – 35%

Awarding Body: Eduqas

A Level **PHOTOGRAPHY**

Assessed:
Externally Set Assignment – 40%,
Coursework – 60%

Awarding Body: AQA

A Level **TEXTILES**

Assessed:
Externally Set Assignment – 40%,
Coursework – 60%

Awarding Body: AQA

A Level **3D DESIGN – PRODUCT, DESIGN & ARCHITECTURE**

Assessed:
Externally Set Assignment – 40%,
Coursework – 60%

Awarding Body: AQA

MUSIC MARK

SUPPORTING
CONNECTING
INFLUENCING

We are proud to hold the Music Mark, a national award recognising schools and colleges that provide high-quality music education.



BTEC Extended Certificate

DANCE

A Level Equivalent: 1 A Level

Assessed:

Controlled Assessment – 33%,
Coursework – 67%

Awarding Body: Pearson Edexcel

BTEC Extended Diploma

**DIGITAL GAMES
DESIGN &
DEVELOPMENT**

A Level Equivalent: 3 A Levels

Assessed:

Coursework – 100%

Awarding Body: Pearson Edexcel

BTEC Extended Certificate

**DIGITAL GAMES
PRODUCTION**

A Level Equivalent: 1 A Level

Assessed:

Exam – 33%,
Coursework – 67%

Awarding Body: Edexcel

BTEC Extended Certificate

MUSICAL THEATRE

A Level Equivalent: 1 A Level

Assessed:

Controlled Assessment – 33%,
Coursework – 33.5%,
Practical Assessment – 33.5%

Awarding Body: Pearson Edexcel

BTEC Extended Certificate

**DIGITAL MUSIC
PRODUCTION**

A Level Equivalent: 1 A Level

Assessed:

External Assessment – 20%,
Coursework – 80%

Awarding Body: Pearson Edexcel

BTEC Extended Certificate

**MUSIC
PERFORMANCE**

A Level Equivalent: 1 A Level

Assessed:

Externally Assessed Coursework – 58%,
Coursework – 42%

Awarding Body: Pearson Edexcel

BTEC Extended Certificate

**TV & FILM
PRODUCTION**

A Level Equivalent: 1 A Level

Assessed:

Controlled Assessment – 33%,
Coursework – 67%

Awarding Body: Pearson Edexcel

T Level

CRAFT & DESIGN

A Level Equivalent: 3 A Levels

Occupational Specialism:

Ceramics

Assessed:

Technical Qualification – 80%
(100% External Assessment),
Industry Placement – 20%

Awarding Body: Pearson

T Level

**MEDIA, BROADCAST
& PRODUCTION**

A Level Equivalent: 3 A Levels

Occupational Specialism:

Content Creation & Production

Assessed:

Technical Qualification – 80%
(100% External Assessment),
Industry Placement – 20%

Awarding Body: Pearson



100%
of BTEC
Performance subjects
gain D*–D grades

**TOP
DESTINATIONS**

Performing Arts students
progress to top destinations
including Emil Dale
Academy, Italia Conti, and
The Arden School

EDUCATION, SOCIETY, SPORT & HEALTH

“

Moving from Zimbabwe was a big transition, and I needed a college that would support me through that change while still challenging me academically. The staff were so helpful – they guided me through my subject choices and showed me how they linked to university degrees and careers in the health and medical field. I feel confident I’m on the right path.



DANALEE PHIRI

Previously: International School

Studies: A Level Psychology, A Level Business Studies and AAQ BTEC in Medical Science

A Level

PHYSICAL EDUCATION

Assessed:
Exam – 70%, Coursework – 15%,
Practical – 15%

Awarding Body: Pearson Edexcel

A Level

PSYCHOLOGY

Assessed: Exam – 100%

Awarding Body: OCR

A Level

SOCIOLOGY

Assessed: Exam – 100%

Awarding Body: AQA

CTEC Extended Diploma

HEALTH & SOCIAL CARE

A Level Equivalent:
Extended Diploma – 3 A Levels

Assessed: Exam – 30%,
Coursework – 60%

Awarding Body: OCR

BTEC Diploma or Extended Diploma

SPORT & EXERCISE SCIENCE

A Level Equivalent:
Diploma – 2 A Levels
Extended Diploma – 3 A Levels

Assessed:
External Assessment – 45%,
Internal Assessment – 55%

Awarding Body: Pearson Edexcel

BTEC Diploma or Extended Diploma

SPORT COACHING & DEVELOPMENT

A Level Equivalent:
Diploma – 2 A Levels
Extended Diploma – 3 A Levels

Assessed:
Internal Assessment – 100%

Awarding Body: Pearson Edexcel

Cambridge Advanced Nationals (CAN)

MENTAL HEALTH: INDIVIDUALS & SOCIETY

A Level Equivalent: 1 A Level

Assessed: Exam – 50%,
Coursework – 50%

Awarding Body: OCR

93%

of our BTEC Sport and Exercise Science Extended Diploma students gain the highest grades compared to 69% nationally



T Level
EDUCATION & EARLY YEARS

A Level Equivalent: 3 A Levels

Occupational Specialism:
Early Years Educator – NCFE

Assessed:
Technical Qualification – 80%
(100% External Assessment),
Industry placement – 20%

Awarding Body: NCFE

T Level
EDUCATION (TEACHING ASSISTANT)

A Level Equivalent: 3 A Levels

Occupational Specialism:
Teaching Assistant – NCFE

Assessed:
Technical Qualification – 80%
(100% External Assessment),
Industry placement – 20%

Awarding Body: NCFE

T Level
HEALTH

A Level Equivalent: 3 A Levels

Occupational Specialism:
Supporting Healthcare
(Adult Nursing)

Assessed:
Technical Qualification – 80%
(100% External Assessment),
Industry placement – 20%

Awarding Body: NCFE



100%

of students on
T Level Health gain
high grades

T-LEVELS

NHS

NHS
Midlands Partnership
and Foundation Trust

City of Stoke-on-Trent

Stoke-on-Trent

Stoke-on-Trent

Just some of our many employer partners

“

I chose Stoke Sixth Form College because of the supportive environment and excellent Health and Social Care facilities. The course has helped me explore a wide range of topics and prepare for university.

I've loved using the immersive rooms for hands-on activities like practising CPR in the WorldSkills competition. In the Aspire+ programme, I've attended first aid sessions to build my skills even further. College has been a great place to learn and grow!

KATIE WALKER

Previously: Trentham Academy

Studies: BTEC Health and Social Care Extended Diploma

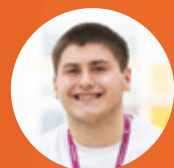


”

HUMANITIES, LANGUAGES & LITERATURE

“

The college environment really stood out to me – it felt like somewhere I'd enjoy learning. Studying History and Politics has really developed my critical thinking skills, which I know will help me in the future. One of my best memories so far has been the trip to Belgium – it brought everything we learned in class to life.



JUDE LIVERSAGE

Previously: St Dominic's priory
Studies: A Level History, A Level Politics
and A Level Business Studies

”

100%

achieved high grades A*–B
in Community Languages

Geography and History
EXCEED

the national average
with grades A*–C

A Level **ARABIC**

Assessed: Exam – 100%

Awarding Body: Pearson Edexcel

A Level **CLASSICAL CIVILISATION**

Assessed: Exam – 100%

Awarding Body: OCR

A Level **FRENCH**

Assessed: Exam – 100%

Awarding Body: Eduqas

A Level **GEOGRAPHY**

Assessed: Exam – 80%,
Coursework – 20%

Awarding Body: Eduqas

A Level **GEOLOGY**

Assessed: Exam – 100%
+ Practical Endorsement

Awarding Body: OCR

A Level **GERMAN**

Assessed: Exam – 100%

Awarding Body: Eduqas

A Level **HISTORY**

Assessed: Exam – 80%,
Coursework – 20%

Awarding Body: Pearson Edexcel

A Level **PHILOSOPHY**

Assessed: Exam – 100%

Awarding Body: AQA

A Level **POLITICS**

Assessed: Exam – 100%

Awarding Body: Pearson Edexcel

A Level **RELIGIOUS STUDIES**

Assessed: Exam – 100%

Awarding Body: OCR

A Level **SPANISH**

Assessed: Exam – 100%

Awarding Body: Eduqas

A Level **ENGLISH LANGUAGE**

Assessed: Exam – 80%,
Non-examination Assessment – 20%

Awarding Body: AQA

A Level **ENGLISH LITERATURE**

Assessed: Exam – 80%,
Coursework – 20%

Awarding Body: OCR

A Level **ENVIRONMENTAL SCIENCE**

Assessed: Exam – 100%

Awarding Body: AQA



SCIENCE, TECHNOLOGY, ENGINEERING & MATHS



PIPPA MELLOR-PRINGLE

Previously: Clayton Hall Academy

Studies: A Level Biology, A Level Chemistry, A Level Maths and A Level Psychology

The Medicine, Dentistry and Veterinary (MDV) programme was perfect for supporting my goal of getting into medical school. I was given the opportunity to study four A Levels to keep my options open, and the college has helped me balance that really well. The science labs are brilliant – we get to do practical experiments at a degree-level standard, which really helps develop skills for the future. I've also taken part in the High Achievers Programme, which offers great extracurricular opportunities for competitive university applications.

MEDICINE, DENTISTRY, VETERINARY (MDV) PROGRAMME

Join this highly successful programme, with a bespoke timetable to experience opportunities including work experience and placements, tailored sessions focusing on progression and a variety of guest speakers and alumni visits to support you in achieving your dreams of entering these professions.

MATHS, ENGINEERING & COMPUTING (MEC) PROGRAMME

A bespoke programme of complimentary subjects which provide the widest choice of careers in these fields. Enjoy participation in real life engineering projects, team challenges, delving into the depths of mathematical analysis and reasoning to support your progression to highly competitive and in demand higher education courses and professions.

81%
achieved grades A*–C
in Chemistry

A Level BIOLOGY

Assessed: Exam – 100%
+ Practical Endorsement

Awarding Body: OCR

A Level CHEMISTRY

Assessed: Exam – 100%
+ Practical Endorsement

Awarding Body: OCR

A Level COMPUTER SCIENCE

Assessed:
Exam – 80%,
Coursework – 20%

Awarding Body: OCR

A Level FURTHER MATHEMATICS

Assessed: Exam – 100%

Awarding Body: Pearson Edexcel

Duration: 1 year (taken in second year of study)



A Level

MATHEMATICS

Assessed: Exam – 100%

Awarding Body: Pearson Edexcel

A Level

PHYSICS

Assessed: Exam – 100%

+ Practical Endorsement

Awarding Body: OCR

A Level

STATISTICS

Assessed: Exam – 100%

Awarding Body: Pearson Edexcel

AAQ (BTEC)

MEDICAL SCIENCE

A Level Equivalent: 1 A Level

Assessed:

Coursework – 42%,

External Assessments – 58%

Awarding Body: Pearson Edexcel

BTEC Extended Diploma

APPLIED SCIENCE

A Level Equivalent: 3 A levels

Assessed:

Coursework – 60%,

External Assessments – 40%

Awarding Body: Pearson

T Level

DIGITAL CYBERSECURITY

A Level Equivalent: 3 A Levels

Occupational Specialism:

Cybersecurity

Assessed:

Technical Qualification – 80%

(100% External Assessment),

Industry placement – 20%

Awarding Body: NCFE

T Level

DIGITAL SOFTWARE & WEBSITE DEVELOPMENT

A Level Equivalent: 3 A Levels

Occupational Specialism:

Software Design

Assessed:

Technical Qualification – 80%

(100% External Assessment),

Industry placement – 20%

Awarding Body: Pearson

T Level

SCIENCE

A Level Equivalent: 3 A Levels

Occupational Specialism:

Laboratory Sciences – NCFE

Assessed:

Technical Qualification – 80%

(100% External Assessment),

Industry placement – 20%

Awarding Body: NCFE

OVER 80%

achieved grades
A*–C in the A Level
MEC programme



T-LEVELS



Just some of our many employer partners



“

I commute from Macclesfield, and Stoke Sixth Form College has been better than anything else nearby. The easy commute, excellent support, dedicated staff, and top-class facilities made it the right choice for me.

When I first started, I didn't know many people, so I made an effort to be friendly and outgoing, and I've since made lifelong friends. I experimented with different study spaces until I found the most productive and comfortable spots, helping me stay on top of my work and succeed in all my subjects.

The Junior Elite Scholarship has been a highlight – it boosted my performance in sport, changed how I view competitions, and gave me extra support for improvement and recovery.

MATTHEW HAND

Previously: All Hallows Catholic College

Studies: A Level Maths, A Level Computer Science and A Level German



”

LEVEL 3 FOUNDATION PROGRAMME



**ASPIRE AWARDS
2025 WINNER**
Achievement award in
GCSE Combined Science

“ Friends recommended the college to me, and I’m so glad they did. The facilities and welcoming atmosphere helped me settle in quickly. I’ve really developed my communication skills, especially through debates, and the trip to the museum was one of my favourite experiences. I definitely feel more confident now.

ESHAL SHERAZ

Previously: International School

Studies: GCSE Maths, GCSE English and GCSE Science

Our students
achieved results
**OVER
TWICE**
the provisional
national average in
Maths and three times
higher in English

Our Level 3 Foundation Programme is designed for students who are not yet ready to begin a full Level 3 study programme, but who have the potential to progress with the right preparation and support.

This one-year course helps you build the qualifications, confidence, and skills needed to move on to A Levels, T Levels, or BTECs the following year.

We offer two pathways within the programme:

1 PATHWAY ONE: **CURRICULUM PATHWAY PREPARATION**

This route is for students who have already completed their GCSEs but need to achieve a grade 4 or above in English or Maths to access Level 3 study. The minimum entry requirement for this programme of study is a grade profile of 3 /4 in English Language and/or Maths.

You’ll follow a curriculum-specific route based on the subject area you’re aiming to progress into. Alongside GCSE English and/or Maths resits, you’ll study a GCSE linked to your chosen pathway.

- > **Business, Finance & Law**
- > **Education**
- > **Creative**
- > **Health**
- > **Digital**
- > **Humanities**
- > **Science**

2 PATHWAY TWO: **QUALIFICATION ACCESS ROUTE**

This route is for students who haven’t yet had the opportunity to sit formal qualifications – such as international students without equivalent qualifications or those who have been homeschooled. All applicants to this course will be invited to attend an assessment day to determine their suitability.

You’ll focus on gaining recognised GCSE qualifications through one of two structured study programmes:

- > **Biology, Chemistry, Physics, Maths, and English**
- > **Classics, Citizenship, English, and Maths**

Whichever route you follow, our Foundation Programme offers the structure, support, and flexibility to help you take the next step with confidence.

ASPIRE CURRICULUM

At the Sixth Form College, we refer to the framework of your study programme as The Aspire Curriculum.

It consists of three main components that shape your educational experience, from gaining qualifications to gathering skills and experiences that will prepare you for life after college. These three components together make up your weekly timetable, ensuring a balanced programme of learning, development, and enrichment.



QUALIFICATIONS

Qualifications are an important part of your college experience. They come in various forms, including academic qualifications (A Levels) vocational qualifications (BTECs) and technical qualifications (T Levels) These qualifications are what you will work towards during your time at the Sixth Form College. **Find out more on page 8.**

ASPIRE+

We understand that college life is about more than just qualifications. We highly value the exceptional skills and talents that our students possess, whether in their studies, the arts, sports, or other areas of excellence. That's why we offer a diverse range of extracurricular activities, including clubs, societies, trips, and visits. These activities enable you to develop your abilities and enhance your employability skills whilst providing a fun and social environment where you can make lasting friendships. **Head to page 35 for more information.**

FUTURES & PERSONAL PROGRESS & DEVELOPMENT SESSIONS (PPD)

We have a comprehensive Futures Programme and Personal Progress and Development (PPD) Sessions aimed at equipping you with the knowledge, support, and inspiration needed to actively plan and prepare for your future. As part of your programme of study, you will also complete 30 hours of work experience. Our primary goal is to provide you with the necessary skills and qualifications that will pave the way for a confident transition into higher education, apprenticeships, or employment opportunities.

ASPIRE PRINCIPLES

At the heart of the Aspire Curriculum are our Aspire Principles, which serve as the foundation for your success and future progression. These principles are represented by the acronym **ASPIRE**.

These principles are integrated throughout the Aspire Curriculum to provide you with the essential tools and mindset for success. We apply these principles to recognise and commend our students when they demonstrate any of the six principles.



Achievement



Skills



Participation



Independence



Respect



Endeavour

FEMALE & MALE FOOTBALL

IN ASSOCIATION WITH
STOKE CITY FOOTBALL CLUB

This unique partnership with Stoke City Football Club will provide aspiring young women and men, aged 16-19, studying any course at the Sixth Form College with the opportunity to participate in high-quality football training and competitive matches, regardless of their chosen field of study.

THIS PROGRAMME IS OPEN TO EVERYONE, WHATEVER YOU STUDY!



MORE THAN QUALIFICATIONS

All of our students develop skills beyond the classroom which are essential for their personal and professional growth.

SPORT ACADEMY

Our Sport Academy aims to provide more students with sporting opportunities alongside academic study with our two key elements; Performance Academies and Elite Scholarship Programme. We can offer both competitive sport and coaching opportunities across various disciplines and deliver sporting excellence for interested students.

> **Performance Academies**

> **Elite Scholarship Programme**

TAKE YOUR SPORT PERFORMANCE TO THE NEXT LEVEL WITH OUR SPORTS ACADEMY

Learn how to access expert coaching and first-class facilities by clicking the link.



ASPIRE+

Aspire+ is a key part of our Aspire Curriculum (see page 32), giving you the chance to gain valuable skills for both academic success and your future career plans. The programme offers a range of clubs, societies, and tailored activities to help you grow, develop new skills, and reach your full potential. It also empowers you to actively contribute to our vibrant learning community.

At college, you'll have the opportunity to take part in activities that build your confidence, boost your employability skills, and help you make lasting friendships, including:

- > **International Enrichment Trips**
- > **Duke of Edinburgh**
- > **Sports Enrichment**
- > **Clubs & Societies**
- > **Music Making**
- > **and many more!**

STUDENT INVOLVEMENT

At Stoke Sixth Form College, students are at the heart of decision-making and development. There are lots of opportunities to take on leadership roles, influence change, and develop skills.

Student Governors are elected each year to represent the student body at the highest level, sitting on the Local Governing Body to ensure student views are heard.

Student Officers are appointed each Autumn to support student-led initiatives, contribute ideas, and work alongside Governors and staff to enhance college life.

Students can also become **Course Representatives**, feeding back on teaching, learning, and assessment in their subject area.

Whatever your role, every student has a voice in shaping our college community.

ASPIRE HIGHER

At our college, we celebrate all forms of talent – academic, creative, and beyond.

We provide the guidance, opportunities, and encouragement to help you explore your strengths, take on challenges, and grow in confidence. Here, you can develop your skills, discover your passions, and prepare for ambitious pathways – from studying at prestigious universities and conservatoires, to securing apprenticeships with global brands, or launching careers with leading employers.

PREPARATION FOR TOP INSTITUTIONS

Each year, students with exceptional skills and ambitions join the High Achievers Programme. They receive thorough preparation to strengthen their applications to top national and international universities, ensuring they stand out in competitive fields.

ACCESS TO PRESTIGIOUS UNIVERSITIES

Studying at prestigious institutions offers unparalleled access to outstanding teaching, research opportunities, and state-of-the-art facilities, enriching students' academic journey and preparing them for success in a competitive job market.

INSPIRING GUEST SPEAKERS

Students engage with guest speakers from leading universities and companies, gaining valuable insights and inspiration to shape their academic and career aspirations.

UNLEASH YOUR TALENT

Whether it's in the arts, sport, music, or entrepreneurship, we provide tailored support, expert coaching, and opportunities to showcase your talents. From performing at events, participating in competitions, to accessing specialist workshops and mentoring, we help you develop your skills, gain recognition, and reach the next level in your chosen field. Our students go on to study at top conservatoires, universities, or sports academies, and some even turn their talents into exciting careers or apprenticeships across the UK.

SPECIALISED SUPPORT & MENTORING

The programme provides personalised mentoring, guidance, and support from professionals with first-hand knowledge of university admissions processes and tests. Students will benefit from individual attention to navigate the complexities of university applications.



A CARING COMMUNITY

We want all our students to enjoy their time at college and we are committed to providing a high level of personalised support, whether that is with your studies, your health and wellbeing or your finances.

STUDENT SUPPORT

Our 'one-stop' Student Services is here to ensure every student receives the guidance, support, and encouragement they need to succeed – both in and out of the classroom.

All students benefit from:

A Progress Coach

Providing one-to-one support to help you stay on track, set ambitious goals, and achieve your potential.

Safeguarding Support & Advice

Ensuring your safety, wellbeing, and peace of mind throughout your time at college.

Mental Health & Wellbeing Support

Offering confidential support, resources, and guidance to help you manage stress, build resilience, and maintain a healthy balance.

Financial Support

Assisting with bursaries, grants, and other funding advice so you can focus on your learning.

We also provide tailored support for students with learning difficulties or disabilities, those with additional caring responsibilities, students living independently, and overseas students. Our aim is to remove barriers, nurture personal growth, and ensure every student has the tools, guidance, and opportunities to thrive academically, personally, and professionally.



Enjoy our Costa Coffee shop and vibrant food hall, offering a range of delicious food and drink. With comfortable spaces to relax, socialise, or catch up on work, these areas are part of our supportive environment designed to promote student wellbeing and a sense of community.

STATE-OF-THE-ART FACILITIES

The Sixth Form College has been designed to give you a learning environment in which you can thrive, create your future, and feel comfortable in being who you are.



Whether you need a quiet place to complete your coursework, access to industry standard facilities to practice your dance routine in, or a social place to grab a bite to eat, there's a space for you!

- Learning Resource Centres including quiet study areas and learning pods.
- High quality dance studio and performing spaces.
- Science Centre with superior laboratories.
- Top class sports facilities based at Staffordshire University and Fenton Manor Sports Complex.
- Power up your learning experience with easy access to laptops through our Lapsafe units and long-term loan offer.
- Access to high-spec internet for personal devices.
- Discover a realm of cutting-edge education through our mind-expanding VR technology.



PRODUCTION STUDIO

Our state-of-the-art Production Studio is designed for live TV! Explore the thrilling world of live broadcasting with cutting-edge technology, professional-grade equipment, and an inspiring creative space. Whether you're aspiring to be in front of the camera or behind the scenes, our Production Studio offers hands-on experience and the chance to bring your ideas to life in real-time.



THE CENTRE FOR MEDICAL & HEALTHCARE SCIENCE

Discover limitless opportunities at our cutting-edge Centre for Medical and Healthcare Science, where seamless transitions between theory and practice redefine learning. Elevate your skills with our immersive rooms and simulated equipment, empower your future, and join a community committed to excellence in shaping the future workforce.



DIGITAL CENTRE

Introducing our cutting-edge Digital Centre, equipped with well-resourced computer labs and high-end servers! Here, you'll find the latest technology at your fingertips, providing an exceptional environment for learning, innovation, and creativity. Whether you're diving into complex coding projects, exploring digital design, or analysing data, our Digital Centre offers everything you need to succeed. Join us and discover a world of opportunities in the heart of digital excellence!



OUTSTANDING SPORTS FACILITIES

Our college has excellent sports facilities within the Sports Academy at Fenton Manor and the University of Staffordshire, including sports halls, a swimming pool, and access to 3G and grass pitches. Whether you're training, competing, or simply staying active, these facilities provide the perfect environment to develop your skills and enjoy sport to the fullest.

FUTURE SUCCESS

Our Futures Programme and Personal Progress and Development (PPD) Sessions are designed to give all students the guidance, skills, and support they need to succeed not only in their chosen subjects but also to prepare for life beyond college, helping you achieve your full potential in your future career and ambitions.

This impressive programme consists of:

- A dedicated Futures Zone, staffed by knowledgeable advisers and a professionally trained, impartial Careers and Progression Advisor, offering a wide range of careers information along with personalised advice and guidance.
- Engaging curriculum content designed to identify and develop relevant employability skills.
- Career-relevant independent study activities embedded into your programme of study.
- Help with finding your future through Unifrog: A computer software programme that is a one-stop shop for careers information.
- Multiple annual events supported by universities and employers plus a wide variety of in-college Higher Education and employers talks throughout the year.
- Creative and stimulating immersion days with a range of employers. Undertake relevant work experience or volunteering.
- We will keep in touch with you regularly with information about apprenticeships, employment opportunities, university taster courses and masterclasses.

To find out more visit the Futures Zone located in the First Floor Pod or visit www.stokesfc.ac.uk

SKILLS BEYOND THE CLASSROOM

PERSONAL PROGRESS & DEVELOPMENT (PPD)

Our Personal Progress and Development (PPD) sessions are designed to complement your studies and help you develop important personal skills. Every student attends in a compulsory 90-minute PPD session each week, giving you the chance to build independence, confidence, teamwork, and leadership — skills that will support both your current studies and your future goals.

PPD also includes an exciting and comprehensive careers programme, embedded into both PPD sessions and curriculum classes. You'll receive guidance on applying to university, writing personal statements, and preparing for the world of work, including CV support and mock interviews.

These sessions are led by our Progress Coaches, who guide and support you throughout your time at college. They also meet with you individually through Progress Reviews to check that you are progressing, achieving your potential, and making the most of the opportunities available to you, whilst helping you to develop your personal growth and social awareness.



WE GET RESULTS

The Aspire Curriculum means that our graduates progress onto outstanding destinations. Including competitive Apprenticeships, Employment, Oxbridge and other prestigious universities to study desirable subjects such as Medicine.



JAMES HOWARD

Results: A Level Math's A, A Level Biology A, A Level Chemistry A, EPQ A

Next steps: Degree Apprenticeship in Business Management with Rolls Royce



EVA-MAE COLCLOUGH

Results: T Level Early Years Education – Distinction

Next steps: University of Chester to study Primary Education



ALEXIA NWANKWO

Results: BTEC Applied Science – Triple Distinction*

Next steps: University of Greater Manchester to study Dental Technology



RUBY WOODWARD

Results: CTEC Extended Diploma Health and Social Care – D*DD

Next steps: University of Staffordshire to study Paramedic Science



EMILY DURBER

Results: BTEC Musical Theatre D*, A Level English Language B, A Level Media Studies A

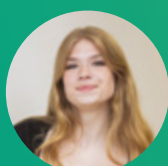
Next steps: Emil Dale Academy to study Musical Theatre Performance



LOIS CULLEN

Results: A Level French A*, A Level German A* and A Level History A

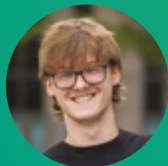
Next steps: University of Cambridge to study History and German



SOPHIE CROWTHER

Results: A Level Chemistry A, A Level Biology A and A Level Environmental Science A*

Next steps: University of Liverpool to study Veterinary Medicine



LUIS CULLEY

Results: BTEC Applied Law D*, BTEC Applied Psychology D* and WJEC Criminology B

Next steps: Keele University to study Law



OWEN MACAULLEY

Results: A Level Chemistry A, A Level Maths A and A Level Physics B

Next steps: Degree Apprenticeship in Engineering with Ibstock



THOMAS SOFTLEY

Results: A Level Economics A*, A Level Business Studies A* and A Level Geography A*

Next steps: LSE (The London School of Economics and Politics) to study Economics, History and Geography

THE FUTURE IS GREEN

We want to protect our planet and your future, so we are continually looking at ways in which we can operate in a greener and more sustainable way.



POTTERIES EDUCATIONAL TRUST

As part of the Potteries Educational Trust (PET), our commitment to sustainability extends beyond the college. Together with other trust members, we share best practice and collaborate on projects that reduce environmental impact, promote green skills, and support sustainable communities. Being part of PET means we're not only shaping a greener college, but also contributing to a more sustainable future for the wider community.

THIS IS WHAT WE'RE ASPIRING TO

- We're actively working to reduce energy consumption by replacing all lights with energy-efficient LED models. We've allocated an annual budget for the LED upgrades and new energy-efficient, low-heat IT equipment, ensuring the continuation of our sustainability efforts.
- Students and staff play an active role in sustainability, with easy access to multiple recycling points located across college grounds and buildings.
- We are thoughtful when using paper and aim to become as paperless as possible.
- To encourage staff and students to use shared transport and reduce their carbon footprint, we are conveniently located next to many bus routes, the train station and roads with cycle routes.
- We use local suppliers when we have the opportunity.
- We have installed electric vehicle charging points on site to support our commitment to sustainability and encourage the use of eco-friendly transport.
- We have bike racks to promote sustainable travel options, making it easier for students and staff to choose cycling as a greener way to commute.

- To save trees, we are reducing the size and number of pages in our prospectus, printing fewer copies and using paper sourced from designated wood; harvested from forests that are responsibly managed, socially beneficial, environmentally conscious, and economically viable.
- We take a digital-first approach by encouraging the use of our NEW digital prospectus as a more eco-friendly option.
- Our new extensions are rated very good in the national BREEAM accreditation.
- To increase our existing energy production on-site; we have installed a solar array on our new extension.

Begin Your Journey. Belong. Beyond.

Scan the QR code to explore our website!
www.stokesfc.ac.uk



T: 01782 854221

E: admissions@stokesfc.ac.uk

W: www.stokesfc.ac.uk



facebook.com
[/SOT6thformcollege](https://www.facebook.com/SOT6thformcollege)



twitter.com
[/SOT6FC](https://twitter.com/SOT6FC)



youtube.com
[/SOT6FC](https://www.youtube.com/SOT6FC)



instagram.com
[/sot6fc](https://www.instagram.com/sot6fc)



The paper we use has been sourced from designated wood harvested from forests that are responsibly managed, socially beneficial, environmentally conscious and economically viable

www.potteries.ac.uk